

A sweeping musical portrait
of early twentieth-century America

RAGTIME

THE MUSICAL

By Terrence McNally • Music by Stephen Flaherty • Lyrics by Lynn Ahrens

“A triumph for the stage.”
TIME MAGAZINE

 COUNTY
PLAYERS
At the Falls Theatre

66th Season Sponsor



Bronze Show Sponsors



Thomas, Drohan, Waxman,
Petigrow & Mayle, LLP

MAY 3, 4, 10, 11, 12, 17, 18, 19, 2024
Directed by **ANNA MARIE PAOLERCIO**

845-298-1491 | COUNTYPLAYERS.ORG
WAPPINGERS FALLS, NY 12590



Great Stories. Well Told. SEASON 67

**MS. HOLMES &
MS. WATSON - APT. 2B** JUL 2024
MAIN STAGE

INCORRUPTIBLE SEP 2024
MAIN STAGE

**ELEANOR
UNDERNEATH THE LINTEL** OCT 2024
CP2 MINI FESTIVAL ①

PERFECT ARRANGEMENT NOV 2024
MAIN STAGE

**BABEL
MARJORIE PRIME** DEC 2024
CP2 MINI FESTIVAL ②

INTO THE BREECHES! FEB 2025
MAIN STAGE

**WITCH
THE BURDENS** MAR 2025
CP2 MINI FESTIVAL ③

BIG FISH THE MUSICAL MAY 2025
MAIN STAGE

*A Funny Thing Happened On The Way To The Forum, 2023
Photo by Louisa Vilardi Photography*

845-298-1491 | COUNTYPLAYERS.ORG
2681 W. MAIN ST., WAPPINGERS FALLS, NY 12590

MAY 3, 4, 10, 11, 12, 17, 18, 19, 2024



At the Falls Theatre

PRESENTS

RAGTIME

THE MUSICAL

By Terrence McNally • Music by Stephen Flaherty • Lyrics by Lynn Ahrens

Based on the novel, "Ragtime" by **E.L. DOCTOROW**
Direction and Staging by **ANNA MARIE PAOLERCIO**
Music Direction by **KAREN DALMER-SHEEHY**
Choreography by **DENISE WORNELL**

66th Season Sponsor



Bronze Show Sponsors



Thomas, Drohan, Waxman,
Petigrow & Mayle, LLP

RAGTIME, THE MUSICAL is presented through special arrangement with Music Theatre International (MTI). All authorized performance materials are also supplied by MTI. Any video and/or audio recording of this productions is strictly prohibited. mtishows.com



Dutchess ProPrint

Printing | Copying | Design | Mailing

***For all your printing
and copying needs!***

845.298.8898

www.dutchessproprint.com

1299 Route 9 | Southside Plaza
Wappingers Falls, NY

Full Color & B/W Digital Printing & Copying
Engineering Prints & Scans (*B/W and Color*)
Mailing Services (including EDDM)
Offset Printing • Graphic Design
Vinyl Banners • Banner Stands • Displays
Posters • Laminating & Mounting
Yard Signs • Vehicle Magnets



CAST (IN ORDER OF APPEARANCE)

The Little Boy	James Keating*
Father	David J. Ringwood
Mother	Amy Schaffer
Mother's Younger Brother	Brian Kuchicki*
Grandfather	Richard Leonard Smith*
Coalhouse Walker Jr.	Mark Colvson
Sarah	Jontae D. Walters
Booker T. Washington	Nick Butler
Tateh/Baron Ashkenazy	Glen Morrice
The Little Girl	Chris Tomer*
Harry Houdini	Ryan Dutcher*
J.P. Morgan	Douglas Woolley
Henry Ford	John Leinung
Emma Goldman	Michele George
Evelyn Nesbit	Lisa Berger*
Admiral Peary.....	Eero Vaitkus
Matthew Henson	Devin Gibbs
Stanford White.....	Michael A. Boden
Harry K. Thaw	Vincent Peter*
Kathleen.....	Karen Hoben
Sarah's Friend	Ceista Little-Quinn
Willie Conklin	Gerard Weiss, Jr.
Brigit.....	Bernadette Dingman*
Charles S. Whitman	John Leinung
Coalhouse Walker III	AvaGrace Sierralee Wilson*

ENSEMBLE – NEW ROCHELLE.....

Connie E. Boden (*Jury*), Michael A. Boden (*Policeman/Fireman*), Karen Hoben (*Chorine*), John Leinung (*Police/Attorney*), Megan Longwell* (*Chorine/Reporter*), Janet Nurre (*Reporter/Jury Foreman*), Vincent Peter* (*Man/Doctor/Candidate/Umpire*), Laura Seaman (*Bureaucrat/Chorine*), Douglas Woolley (*Mill Owner*)

ENSEMBLE – HARLEM

Melinda Aaron (*Harlem Woman/Band*), John H. Carter III (*Lawyer/Coalhouse Follower*), Cassandra D. Clarke*, Tracy Dunstan* (*Band*), Devin Gibbs (*Band/Coalhouse Follower*), Robert S. Grable* (*Coalhouse Follower*), Quinn Jackson* (*Coalhouse Follower*), Kiara Melendez* (*Chorine/Band*), Ceista Little-Quinn, Samuel Petty* (*Coalhouse Follower*), Yvonne Tirado (*Harlem Woman*)

CAST (CONT'D)

ENSEMBLE – LOWER EAST SIDE.....

Andrea Buergers (*Baron's Assistant/Jury*), Antonella Delli Carpini* (*Bureaucrat/Jury/Welfare Official*), Bernadette Dingman* (*Jury*), Ryan Dutcher* (*Train Conductor/Newsguy*), Emily Holland* (*Jury*), Eero Vaitkus (*Jury/Fireman*), Gerard Weiss, Jr. (*Jury*), Jonah Woodcock* (*Judge/Fireman*)

*Denotes County Players Stage Debut

CONTENT ADVISORIES:

This production of Ragtime contains the following:

- Inappropriate and off-putting language, including ethnic slurs
- Depictions of violence and death, including shootings
- Loud sound effects, including an explosion and simulated gunshots
- Visual effects, including strobe lights

SYNOPSIS

At the dawn of a new century, everything is changing...and anything is possible. Set in the volatile melting pot of turn of the 20th century New York, three distinctly American tales are woven together – that of a stifled upper-class wife, a determined Jewish immigrant, and a daring young Harlem musician – united by their courage, compassion, and belief in the promise of the future. Together, they confront history's timeless contradictions of wealth and poverty, freedom and prejudice, hope and despair, and what it means to live in America.

RAGTIME had its world premiere in Toronto, where it opened at the then-called Ford Centre for the Performing Arts (now the Meridian Arts Centre) on December 8, 1996 and ran for 9 months. It was produced by Canadian impresario Garth Drabinsky and his Livent Inc., the Toronto-production company he headed. The US premiere was at the Shubert Theatre, Los Angeles in June 1997. The Broadway production began previews on December 26, 1997 and officially opened on January 18, 1998. It was the first production in the newly opened Ford Center for the Performing Arts. Directed by Frank Galati and choreographed by Graciela Daniele, *RAGTIME* closed on January 16, 2000 after 834 performances and 27 previews. The original cast featured many of the actors from the original Toronto production, including Brian Stokes Mitchell as Coalhouse Walker Jr., Marin Mazzie as Mother, Peter Friedman as Tateh, and Audra McDonald as Sarah, all of whom were nominated for Tony Awards, as well as Steven Sutcliffe as Mother's Younger Brother, Judy Kaye as Emma Goldman, Mark Jacoby as Father, and Lea Michele

as Tateh's Daughter. The production was conducted by David Loud. It led the 1998 Tony Awards with thirteen Tony Award nominations; it won awards for Best Featured Actress (McDonald), Original Score, Book, and Orchestrations.

SPECIAL THANKS

Donald Birely, DB Theatricals, Jimmy Fedigan, Tom Lawrence, Market Street Industrial Park, Heather Price, Tony Ravinsky, Roy C. Ketcham High School Masque & Mime Society, Southern Dutchess News, The CENTER for Performing Arts at Rhinebeck

ACT ONE

Prologue:

RAGTIME The Company

Scene 1: Dock in New York Harbor / At Sea

GOODBYE, MY LOVE Mother
JOURNEY ON Father, Tateh, Mother

Scene 2: A Vaudeville Theatre, New York City

THE CRIME OF THE CENTURY Evelyn Nesbit, Mother's Younger Brother,
Ensemble

Scene 3: Mother's Garden, New Rochelle

WHAT KIND OF WOMAN Mother

Scene 4: Ellis Island / Lower East Side

A SHTETL IZ AMEREKE Tateh, The Little Girl, Ensemble
SUCCESS Tateh, J.P. Morgan, Harry Houdini, Ensemble

Scene 5: The Tempo Club, Harlem / Ford's Assembly Line

HIS NAME WAS COALHOUSE WALKER Harlem Ensemble, Coalhouse
THE GETTIN' READY RAG Coalhouse, Ensemble
HENRY FORD Henry Ford, Coalhouse, Ensemble

Scene 6: Railroad Station, New Rochelle

NOTHING LIKE THE CITY Tateh, Mother, The Little Boy, The Little Girl

Scene 7: Emerald Isle Firehouse

Scene 8: Mother’s House, New Rochelle

YOUR DADDY’S SON.....Sarah
THE COURTSHIP Mother, Grandfather, Mother’s Younger Brother,
The Little Boy, Ensemble
NEW MUSICFather, Mother, Mother’s Younger Brother,
Coalhouse, Sarah, Ensemble

Scene 9: A Hillside above New Rochelle

THE WHEELS OF A DREAMCoalhouse, Sarah

Scene 10: A Union Hall in New York City / Lawrence, Massachusetts / A Train

THE NIGHT THAT GOLDMAN SPOKE AT UNION SQUAREMother’s Younger
Brother, Emma Goldman, Ensemble
GLIDINGTateh

Scene 11: New Rochelle and New York City

JUSTICE..... Coalhouse, Ensemble
PRESIDENTSarah
TILL WE REACH THAT DAY.....Sarah’s Friend, Coalhouse, Emma Goldman,
Mother’s Younger Brother, Mother, Tateh, Ensemble

THERE WILL BE ONE 15-MINUTE INTERMISSION.

ACT TWO

Entr’acte.....The Orchestra

Scene 1: The Streets of New Rochelle / Mother’s House

COALHOUSE’S SOLILOQUYCoalhouse
COALHOUSE DEMANDS.....Ensemble, Conklin, Firemen, Coalhouse’s Followers,
Booker T. Washington, Coalhouse

Scene 2: The Polo Grounds

WHAT A GAMEUmpire, Father, The Little Boy, Grandfather, Ensemble

Scene 3: Mother’s House

ATLANTIC CITY, PART I.....Evelyn Nesbit, Harry Houdini
NEW MUSIC (Reprise).....Father

Scene 4: Atlantic City / Million Dollar Pier / Boardwalk

ATLANTIC CITY, PART II..... Evelyn Nesbit, Harry Houdini, Ensemble
BUFFALO NICKEL PHOTOPLAY, INC. Baron Ashkenazy
OUR CHILDREN..... Mother, Baron Ashkenazy

Scene 5: Harlem / Coalhouse’s Hideout

SARAH BROWN EYES Coalhouse, Sarah
HE WANTED TO SAY Emma Goldman, Mother’s Younger Brother,
Coalhouse’s Followers

Scene 6: The Beach, Atlantic City

BACK TO BEFORE..... Mother

Scene 7: The Morgan Library, New York City

LOOK WHAT YOU’VE DONE Harlem Women, Booker T. Washington, Father,
Coalhouse’s Followers, Sarah
MAKE THEM HEAR YOU Coalhouse

Epilogue:

RAGTIME / THE WHEELS OF A DREAM (Reprise)..... The Company

ORCHESTRA

Music Director, Conductor, Keyboard 1 Karen Dalmer-Sheehy
Bass Don Cooksey
Guitar Matt Levinstein (substitute: Rob Helsel)
Keyboard 2 John Barath
Percussion Vinny Rizzi
Reeds Roger D’Aquino
Trombone Michael Roe
Trumpet Jim Mulder
Violin Gina M. Stevens (substitute: Kris Rizzo)

DIRECTOR'S NOTE

Welcome to our production of *Ragtime*, a musical that delves deep into the tapestry of American society at the turn of the 20th century. As the director of this production, I am thrilled to bring to life the vibrant characters, powerful themes, and captivating music that make this production such a compelling and relevant piece of theatre.

Set against the backdrop of bustling New York City, *Ragtime* weaves together the stories of three diverse groups: African Americans, represented by Coalhouse and Sarah; Eastern European immigrants, embodied by Tateh and his daughter; and affluent white Americans, including Mother, Father, and their family. Through their intersecting lives, we witness the clash of cultures, the struggle for justice, and the pursuit of the American Dream.

One of the strengths of *Ragtime* is its ability to resonate with audiences on multiple levels. It invites us to reflect on issues of race, class, and identity, drawing parallels between the challenges faced by the characters in the early 1900s and those that persist in our society today. By immersing ourselves in their journeys, we gain empathy, understanding, and a renewed sense of urgency to address social inequalities.

Central to our production are the music and lyrics. The ragtime rhythms, poignant ballads, and stirring anthems not only enhance the storytelling, but also evoke the rich tapestry of American musical traditions. Each song carries emotional depth and narrative significance.

Our talented cast, crew, and creative team have poured their hearts and souls into this production, embracing the complexities of the characters and the era with dedication and passion. Together, we have explored the nuances of human relationships, the dynamics of societal change, and the enduring power of hope in the face of adversity.

I encourage you to immerse yourself fully in the world of the show. Let the music transport you, the performances move you, and the themes challenge you. May this production spark conversations, inspire empathy, and remind us of the enduring quest for justice and equality that defines the American spirit.

Thank you for joining us on this journey through history, music, and the human experience. Enjoy the show!

ANNA MARIE PAOLERCIO, DIRECTOR

A NOTE ABOUT LANGUAGE

Language is powerful. As Coalhouse himself says, "Your sword can be a sermon or power of the pen." In the spirit of telling the story of *Ragtime* truthfully, the playwright elected to imply the use of racial and ethnic epithets to highlight moments of racism and nativism within the story. The creative team has chosen to honor the author's intent and present the realities of life in our country at the turn of the 20th century. If the language makes you feel uncomfortable, then we have served the author well.

COUNTY PLAYERS BOARD OF GOVERNORS

WHO'S WHO (IN ALPHABETICAL ORDER, CAST THEN CREW)

MELINDA AARON (*Ensemble*) is once again climbing out of the orchestra pit to be on the stage. She has played various low woodwinds in multiple County Players productions including *West Side Story*, *South Pacific*, *Anything Goes*, *A Chorus Line*, *La Cage aux Folles*, *H2S*, and *Joseph*. . .She was also music director for *Baby*, and onstage for *Jesus Christ Superstar* (SOUL GIRL). In addition to County Players productions, Melinda has been onstage and in the pits for other companies, including Rhinebeck Theatre Society, 90 Miles Theatre Company, Millbrook Community Theater, and CAST of Hyde Park. Melinda is a retired music educator/music therapist, a mom of two, and *waaaaay* busier now than she was before she retired!

LISA BERGER (*Evelyn Nesbit*) is proud to be performing in her first principal role after a decade away from the stage. Favorite past ensemble credits include *La Boheme* and *Amahl and the Night Visitors*. "Thanks to this incredible cast and crew for the phenomenal experience, and to the family and friends who have supported me over the years."
County Players Debut!

CONNIE E. BODEN (*Ensemble*) is so grateful to be a part of *Ragtime*! Recent County Players credits: *An Ideal Husband* (LADY MARKBY), *Calendar Girls* (Costume Design), *A Funny Thing Happened on the Way to the Forum* (GYMNASIA / Costume Design), *Young Frankenstein*, *The Drowsy Chaperone*, and *Guys and Dolls* (all ENSEMBLE). Additional credits include, *Annie Warbucks* (MRS. PUGH) with 90 Miles Theatre Company, as well as *Oliver!* (NANCY) and *Joseph and the Amazing Technicolor Dreamcoat* (POTIPHAR'S WIFE) with Stable Theater of Bamber, Germany. Connie earned an M.A. in English Literature from Hofstra University and loves working as a docent at the Locust Grove Estate. "Many thanks to Anna Marie and Julie for the opportunity to spend some time in New Rochelle at the turn of the 20th century. Much love to Mike."

MICHAEL A. BODEN (*Stanford White, Ensemble*) is honored to be a part of this great team! He has been a part of multiple County Players productions, both onstage and as crew, with notable productions including *An Ideal Husband* (MASON), *A Funny Thing Happened on the Way to the Forum* (MARCUS LYCUS), *It's Only a Play* (Stage Manager), and *The Drowsy Chaperone* (FELDZEIG), as well as *Kinky Boots* (MR. PRICE) with Dutchess Community College Performing Arts and *Into the Breeches* (Stage Manager) at The CENTER for Performing Arts at Rhinebeck. Mike teaches history at Dutchess Community College, and served 23 years as an armored cavalryman in the US Army. "Thanks to Anna Marie for this opportunity and the entire cast and crew for their fantastic work on this show. Love always to Connie. Go Army, Beat Navy!"

ANDREA BUERGERS (*Ensemble*) has performed in many venues throughout the Hudson Valley, including County Players and at The CENTER for Performing Arts at Rhinebeck. She was last seen at County Players in *A Funny Thing Happened on the Way to the Forum* (DOMINA), and is thrilled to be performing in this powerhouse of a musical. When not onstage, Andrea is a retired Wappingers CSD music teacher, and celebrates the opportunity to contribute to community theater. She dedicates this performance to her grandparents, who entered Ellis Island so many years ago. "Many thanks to Anna Marie for her visionary creativity, and to this multi-talented cast and production team."

NICK BUTLER (*Booker T. Washington*) is a native of Newburgh, NY, and has been involved in theatre for over 30 years. He was last seen on this stage in *Memphis*. Nick is happy to be performing in *Ragtime*, one of his favorite shows. Other shows you might have seen him in: *The Full Monty*, *The Color Purple*, *Showboat*, *Ain't Misbehavin'*, *A Few Good Men*,

Little Shop of Horrors, *Smokey Joe's Café*, *Grease*, and many others. Thanks to this hard-working cast and crew for all the good work that has gone into making this production a great one.

JOHN H. CARTER III (*Ensemble*) is celebrating his seventh production with County Players! Previous productions include: *West Side Story* (SHARK), *Jesus Christ Superstar* (JUDAS), *Memphis* (GATOR), *Guys and Dolls* (BENNY SOUTHSTREET), *The Xmas Spectacular* (SINGER), and *Young Frankenstein* (COUNT DRACULA). John is ecstatic to be able to share the stage with such a wonderful and diverse cast! He is happy to be working with Anna Marie for the third time! He would like to give special thanks to Karen Sheehy for stepping up to be music director!

CASSANDRA D. CLARKE (*Ensemble*) is a poet, sculptor, playwright, and painter. She has always been spiritually strengthened by the arts. She was motivated to consider a role in the County Players production of *Ragtime* due to her dad's role as an extra when *Hello, Dolly!* was filmed at the Poughkeepsie train station. He reported the experience as being fun. Cassandra has performed poetry at The Poughkeepsie Farm Project, *Farm Festival and Poetry at the Pavilion*, with Poet Gold and several others. She performed last month as part of *CAPS Anthology* at Mid-Hudson Arts Center. She has dabbled in writing and directing short one-act plays for the church community. She's been a production assistant in one of the first independent films, *Decisions*, made in Dutchess County, produced and directed by Nile Clarke and Robert Grant. Cassandra worked professionally investigating child sexual abuse in Orange County. **County Players Debut!**

MARK COLVSON [he/him/his] (*Coalhouse Walker Jr.*) is thrilled to be back at County Players. Previous credits include *An Ideal Husband* (GORING), *My Fair Lady* (PICKERING), and *I'll Be Back before Midnight* (GEORGE). Other favorite roles include: *Amelie* (BRETODEAU/DUFAYEL); *Shakespeare in Love* (WABASH), *Parade* (NEWT LEE), *As You Like It* (DUKE SENIOR); *American Son* (STOKES), *Ragtime* (BOOKER T. WASHINGTON) at The CENTER For Performing Arts at Rhinebeck; *Shrek the Musical* (DONKEY), *Jane Eyre* (BROCKLEHURST) and *Joseph and the Amazing Technicolor Dreamcoat* (REUBEN) at 90 Miles Theatre Company; *Seven Guitars* (HEDLEY) at SUNY New Paltz; *Caine Mutiny Court Martial* (DR. LUNDEEN) at New Day Repertory; *dEAD dOG pARK* (JOHN JONES) at Philipstown Depot Theatre. "Thanks to my brilliant castmates, and to Anna Marie, Julie, Karen, and the whole production crew for your extraordinary dedication, hard work and patience. Special thanks and love to my wife for her support, especially the home-baked bread!"

ANTONELLA DELLI CARPINI (*Ensemble*) is delighted to be joining County Players for this beautiful production. A few previous favorite roles include: *Amahl and the Night Visitors* (THE MOTHER), *Albert Herring* (FLORENCE PIKE), *La Boheme* (MIMI), *Dead Man Walking* (SISTER ROSE), *The Most Happy Fella* (MARIE US), *Suor Angelica* (LA SUORA INFERMIERA), *Le Nozze di Figaro* (LA CONTESSA ALMAVIVA), *Cenerentola* (TISBE), *La fille du regiment* (LA MARQUISE), and *Adriana Lecouvreur* (DANGEVILLE). Many thanks to her family, and the cast and crew for such a wonderful experience. "Toi toi toi!" **County Players Debut!**

BERNADETTE DINGMAN (*Brigit, Ensemble*) is so thrilled to be part of this County Players production! Elsewhere, past shows include *The Sound of Music* (ENSEMBLE NUN) and *Shakespeare in Love* (WEBSTER). She also appeared in college productions such as *No Child*. Bernadette loves period stories and costuming, so this show was especially exciting for her. She wants to thank her family and cats for making it all possible! **County Players Debut!**

TRACY DUNSTAN [she/her/hers] (*Ensemble*) is making her theatre debut. She previously participated as part of the costume crew with John Jay Senior High School's Proscenium group for *The Sound of Music*, *Our Town*, *Oliver!*, and *Jekyll and Hyde*. Tracy also was in the crew for the Tribeca Film Festival from 2012-2016. Currently, she's the Head of Adult & Digital Services at the Nyack Library in Nyack, NY, and loves history and travel. Thanks to her mother, Opal, Tisha, and all the family and friends who encouraged her to go on this wonderful experience with County Players! **County Players Debut!**

RYAN DUTCHER (*Harry Houdini*) is thrilled to be playing one of his idols, Harry Houdini, once again. In 2018, Ryan returned to acting in this same role at The CENTER for Performing Arts at Rhinebeck. Ryan is a full-time entertainer, illusionist, and comedian born and raised here in the Hudson Valley. He launched his career through philanthropic work for charitable organizations. Today, Ryan tours the country restoring laughter and wonder through magic and comedy. He opens for today's biggest super stars and has appeared in many film and television shows. He is also a magic consultant for Broadway. Ryan loves spending time with his amazing girlfriend, Maria, and rescue pup, Copper (extra bonus points if you know after whom he's named). He would like to dedicate this performance to Kevin Archambault. For more info on Ryan, connect with him on social media @illusionistryandutcher or visit RyanDutcher.com. **County Players debut!**

MICHELE GEORGE (*Emma Goldman*) is happy to return to the County Players stage in *Ragtime*. Recent County Players credits include *The Book of Will* (REBECCA HEMINGES/ ANNE HATHAWAY SHAKESPEARE), *Young Frankenstein* (FRAU BLÜCHER), *The Drowsy Chaperone* (CHAPERONE) and *Guys and Dolls* (ADELAIDE). Other favorite roles include *City of Angels* (DONNA/OOLIE) with County Players, and *Little Shop of Horrors* (AUDREY) and *The 25th Annual Putnam County Spelling Bee* (RONA LISA PERETTI) both with Creative Theatre-Muddy Waters Players. When not onstage, she teaches elementary school orchestra and creates a new generation of theatre geeks as the director of her school's yearly musical. Michele would like to thank the many people who worked tirelessly to bring *Ragtime* to life.

DEVIN GIBBS [he/him/his] (*Matthew Henson, Ensemble*) is thrilled to return to the County Players stage as an adult. He debuted in the County Players' *Broadway Kids* cabaret before graduating with a degree in performance from the Massachusetts College of Liberal Arts, where he was featured in their production of *Passing Strange* (MR. FRANKLIN/MR. VENUS) and starred in *Topdog/Underdog* (BOOTH). He would like to thank his parents, his brothers, and his girlfriend, Jill, for all of their support.

ROBERT S. GRABLE (*Ensemble*) is a native of the Hudson Valley, born and raised in Newburgh, NY, currently resides in New Windsor, NY, and is interestingly named after the famous actor, Robert Stack. He attended classes in the Newburgh school district and graduated from Kaiser University. Robert has a passion for physical fitness, singing, theatrical arts, and spending time with his friends and family. He is a devoted and Lifetime Member of the Mount Carmel Church of Christ, DOC, Newburgh, NY, where Elder Dr. Thermond E. Herring is the pastor. It was at Mt. Carmel that Robert made his debut in his first theatrical event in 2010, and then knew he had a passion for the arts. His love for the arts, fashion, and acting has been immeasurable and everlasting. For over 30 years, he has had the great fortune of working at the United States Military Academy, West Point, NY.

KAREN HOBEN (*Kathleen, Ensemble*) previously performed in the County Players productions of *A Funny Thing Happened on The Way to the Forum* (PANACEA); in the dance ensembles of *Young Frankenstein*, *Guys and Dolls*, *Dirty Rotten Scoundrels*, and

Memphis; Trinity's production of *In the Heights*; RPAC's *Cabaret 07* and *Chicago* (GO TO HELL KITTY / ENSEMBLE). Karen is also an actor for Murder Cafe. She has a strong background in dance and is honored to be a part of this show. Love and thanks to her great loves, Tim and Liv!

EMILY HOLLAND (*Ensemble*) has credits that include *Waiting for Lefty* (LEFTY), *Macbeth* (LADY MACBETH), *Water by the Spoonful* (YAZ), *Motherf*cker with the Hat* (VICTORIA) at Lehman Stages and *The Zombies: A Musical* (CHLOE) at Peter Jay Sharpe Theatre. A huge thanks to the cast and crew for an amazing re-entrance into the theatre world. "You've made it so special. Special thanks to my son, Gabriel, for being an honorary cast member and hanging out through ALL the rehearsals!" **County Players Debut!**

QUINN JACKSON (*Ensemble*) is brand spanking new to the world of theatre, but hey, she guesses she has to start somewhere. She firmly believes that you just have to do it, and what doesn't kill you only makes you stronger. To which she says, "BRING IT ON!" **County Players Debut!**

JAMES KEATING (*The Little Boy*) started his acting career at Star2B in *The Jungle Book* (ENSEMBLE) and *Frozen* (HANS). He continued lighting up the stage with Beacon Performing Arts Center in the following productions: *Beauty and The Beast* (BEAST), *The Lion King* (SIMBA), *Aladdin* (ALADDIN), *Annie* (OLIVER WARBUCKS), and *Newsies* (ALBERT). James' favorite performance was his most recent school production of *Shrek* (SHREK). When not onstage, you can find him skiing, swimming, or dancing around the house! "Thank you to ALL of his castmates for making his first experience at County Players memorable, Anna Marie and Julie for their continued support, and his family; especially Mom and Dad, for not only enduring hours of rehearsal each week, but for being my biggest fans!" **County Players Debut!**

BRIAN KUCHICKI [he/him/his] (*Mother's Younger Brother*) is returning to the stage after a decade-long hiatus. He is immensely grateful to the extraordinary company of *Ragtime* and thrilled to have found a new home at County Players. Brian's favorite role is husband to Josh, whom he thanks for his support and encouragement. Other favorite roles include: Middle Brother, Doting Son, Devoted Dog Dad, and Proud Uncle. He dedicates this performance to his nieces, Rebecca and Margaret, urging them to always seek out "New Music." **County Players Debut!**

JOHN LEINUNG (*Henry Ford, Charles S. Whitman, Ensemble*) has County Players credits that include *An Ideal Husband* (LORD CAVERSHAM) and *A Funny Thing Happened on the Way to the Forum* (SENEX). He recently received a TANY award for his appearance in *Blithe Spirit* (CHARLES CONDOMINE) with The Two of Us Productions. John has appeared elsewhere in *Twelve Angry Jurors* (Juror #3), *A Shayna Maidel* (MORDECHAI WEISS), and *The Lady and the Clarinet* (GEORGE), among others. He spent 30 years as a video editor, cameraman, and sound man. John thanks his wife, Elaine, for putting up with the many hours of rehearsal, the rest of the cast and technicians, and County Players for this opportunity.

CEISTA LITTLE-QUINN (*Sarah's Friend, Ensemble*) had her first County Players credit in *Memphis* (ENSEMBLE). She is presently an adjunct professor at SUNY New Paltz (BSD) and sings with Jazz Pioneers in the Poughkeepsie area. Ceista thanks her daughter, Ashanti Sundiata, and her grandsons, AJ and Noah, for being so supportive.

MEGAN LONGWELL [she/her/hers] (*Ensemble*) is returning to the stage after ten years away. She is overjoyed for this to be her return production. Megan previously performed

in New York regional productions such as *The Who's Tommy* (ACID QUEEN), *Elegies* (ONLY ONE), *Into the Woods* (WITCH), and *Eurydice* (ORPHEUS). She also had the pleasure to perform in The Public Theater's production of *Chataouqua* (ENSEMBLE). Megan performed locally with multiple bands across the Hudson Valley, including Ric Mysterie and Bakklash. She thanks her parents and husband, Alec, for their love and support!

County Players Debut!

GLEN MORRICE (*Tateh, Baron Ashkenazy*) is happy to return to the County Players stage. Their previous shows with County Players are *An Ideal Husband* (VICOMTE DE NANJAC/HAROLD), *A Funny Thing Happened on the Way to the Forum* (HYSTERIUM), *Native Gardens* (PABLO), and *Young Frankenstein* (ENSEMBLE). Their other past performances include *Peter and the Starcatcher* (MACK/FIGHTING PRAWN) and *Avenue Q* (ROD) with Up in One Productions, *Rent* (BENNY) with CENTERstage Productions, and *Safe* (ENSEMBLE) with Rhinebeck Theatre Society, and *Fiddler on the Roof* (MOTEL) and *Arsenic and Old Lace* (LT. ROONEY) with New Deal Creative Arts. Glen would like to thank Wendy Urban-Mead for all of her help, Karen, Molly, and Aidan Sheehy as well as Glen's friends and family for all of their continued support. Most of all, they would like to thank their grandparents, Barbara and Martin Morrice and Benita and Kresimir Obradovic, for following their dreams and coming to America.

JANET NURRE (*Ensemble*) has appeared in many County Players productions, most recently *Calendar Girls* (JESSIE), *The Price* (ESTHER), *Prelude to a Kiss* (TAYLOR) and CP2's *Ada and the Engine* (MARY SOMMERVILLE). Other recent credits include *Romeo and Juliet* (LADY MONTAGUE) with Brewster Theater Company, *The Language Archive* (EMMA) with CENTERstage Productions, and *Constellations* (MARIANNE), *How I Learned to Drive* (LI'L BIT) and *Grounded* (THE PILOT) with Rosendale Theater Collective. Janet is a veterinary receptionist in real life. She is grateful to her allies and accomplices, and the patrons, donors and volunteers who cultivate the Hudson Valley's arts community.

VINCENT PETER (*Harry K. Thaw, Ensemble*) is thrilled to be a part of County Players' production of *Ragtime*. This is his first time onstage since doing Masque & Mime at Roy C. Ketcham High School. He is happy to be back in the Hudson Valley with all its rich history and sites. He teaches Public Speaking at Kingsborough Community College/CUNY in Brooklyn and runs his own business, Planet Pepper, here in the Hudson Valley. He'd like to thank his sister, Joanne, for planting the seed to audition; his husband, Alex, for driving him and late-night dinners; the puppies for listening to his warm ups; his brother, Danny, and his friend, Antonella, for practicing with him; and his mother, whom he misses you every day, for teaching him to love music. **County Players Debut!**

SAMUEL PETTY (*Ensemble*) marks this as his first theatre production since high school, when he was in *Aladdin Jr.* (SULTAN) with the Beacon Players, having previously played Aladdin when he was 11. Samuel sang Handel's "Dixit Dominus" and two contemporary pieces on May 4th with Capella Festiva at the Vassar College Chapel. He runs "I Feel I'll Write Today" (*ig@writetodaybeacon*), a twice-monthly creative writing group in Beacon. Samuel serves on the vestry with his church, and daylights as a registrar at Vassar Hospital. He has had much fun with his *Ragtime* companions, and hopes he will have many more opportunities for future stage performances. "I feel blessed to have such abundance in my life, and I dearly hope that it continues." **County Players Debut!**

DAVID J. RINGWOOD (*Father*) is a member of the County Players Board of Governors and former secretary. He has produced and/or directed many shows locally. Since his County Players debut in *Company* (ROBERT), David has appeared on the Falls Theatre stage many (many) times, most recently in *Calendar Girls* (ROD). Other favorite County

Players shows/roles have included: *You Can't Take It with You* (MR. KIRBY), *Amadeus* (JOSEPH II), *Spamalot* (KING ARTHUR), *Aida* (ZOSER), and *Born Yesterday* (ED DEVERY). David directed *A Funny Thing Happened on the Way to the Forum* last May; other County Players director credits include *Jesus Christ Superstar*, *H2S*, and *Evita*. He wishes to thank everyone for the opportunity to work with this talented and dedicated production team, amazing cast and crew (friends old and new), and to be a part of this particularly moving tale. He also wishes to thank his supportive children, Liam and Grace, and (as always) "April."

AMY SCHAFFER (*Mother*) is thrilled to be working with such an amazing cast and crew! Past roles here include *An Ideal Husband* (MRS. CHEVELEY), *Who's Afraid of Virginia Woolf?* (HONEY), *On Golden Pond* (CHELSEA), *Young Frankenstein* (INGA), *Pride and Prejudice* (JANE BENNET / MISS DEBOURGH), *Almost, Maine* (SANDRINE/RHONDA), *The 25th Annual Putnam County Spelling Bee* (RONA LISA), *The Drowsy Chaperone* (JANET VAN DE GRAFF), *A Charlie Brown Christmas* (LUCY), *Dirty Rotten Scoundrels* (CHRISTINE COLGATE), *The Marvelous Wonderettes* (SUZY), *The Miracle Worker* (KATE KELLER), *Grease* (SANDY), *She Loves Me* (AMALIA BALASH), *The Last Night of Ballyhoo* (SUNNY), and *Into the Woods* (CINDERELLA). Other notable roles: *The Music Man* (MARIAN PAROO), *Lend Me a Tenor* (MAGGIE), *A Midsummer Night's Dream* (HELENA), and *Sunday in the Park with George* (YVONNE/NAOMI). She sends very special thanks to the five best people (Morgan, Abby, Emily, Kate, and Rebecca) and to her mom for always being there!

LAURA SEAMAN (*Ensemble*) is performing in her fifth musical with County Players. Previous credits include *A Funny Thing Happened on the Way to the Forum* (VIBRATA), *Young Frankenstein* (ENSEMBLE), *The Drowsy Chaperone* (ENSEMBLE), and *Guys and Dolls* (MISSOURI MARTIN). Laura is an RN at West Point and has a BFA in Dance from SUNY Purchase. She is an accomplished modern dancer and choreographer. Laura is grateful for this opportunity and to be in the company of such a talented cast and crew. She would like to thank her family and friends for their love and support.

RICHARD LEONARD SMITH (*Grandfather*) is thrilled to be returning to the stage after a 25-year hiatus. He performed on Broadway in *Camelot* (SIR DINADAN, u/s ARTHUR) and six other National Tours. He last appeared in *Baby* (ALAN) for ARC Stages in Pleasantville. Favorite shows include *110 in the Shade* (STARBUCK) and *Carousel* (ENOCH SNOW). He can be seen on TV in *Ray Donovan* and *Love Life*. He is also so proud to be sharing the stage with his daughter, Megan Longwell. **County Players Debut!**

YVONNE TIRADO (*Ensemble*) is feeling great to be back on the County Players stage, having previously appeared in *Once on This Island* (MAMA EURALIE), *Memphis* (BACKUP SINGER), and *The Full Monty* (JOANIE LISH)! Acting has always felt like home, especially after retiring from teaching. As an actor, she considers herself fortunate to be motivated and encouraged in and outside the classroom. "Thank you, Michael Luggio, for everything you do. Including my fellow actors, you inspire us with your virtuosity. Sincerely grateful to my children, husband, close friends, and family for their love and support in this journey. Many thanks to Anna Marie, cast, and crew for always making this experience memorable."

CHRIS TOMER [they/them/their] (*The Little Girl*) notes favorite credits outside of this company as including *Big Fish* (SANDRA), *Seussical* (JOJO), *Batboy* (PAN), *Songs for a New World* (ACTOR), and *The Wolves* (#2). "Thanks to Catherine Doherty for being an amazing director and mentor throughout college. Thanks to the cast and crew for making this show what it is." **County Players Debut!**

EERO VAITKUS (*Admiral Peary, Ensemble*) had his County Players debut in 1987 in *Fiddler on the Roof* (RUSSIAN/VILLAGER), and was most recently on this stage in last year's *A Funny Thing Happened on the Way to the Forum* (PROTEAN). Eero enjoyed working under Anna Marie's directorial and choreographic leadership in numerous shows including 2010's *The Full Monty* (GARY/STRIPPER), 1994's *Little Shop of Horrors* (WINO), 1993's *West Side Story* (BIG DEAL), and 1991's *Camelot* (BLIANT). Through his immigrant parents' stories, Eero can relate to the struggles that new Americans face and overcome. Eero thanks his wife, Tina, for her unwavering encouragement and steadfast support, and his son, Liam, who is his biggest fan.

JONTAE D. WALTERS (*Sarah*) is extremely happy and blessed to be playing this part in *Ragtime*. Normally, she is found acting around the Hudson Valley in dinner theatre shows for ACME of the Hudson Valley. If she's not doing that, then you will most likely find her crocheting somewhere in a corner. She would like to thank all of the friends and family who have come out to support her for this life-changing and memorable show. "Enjoy!"

GERARD WEISS, JR. (*Willie Conklin, Ensemble*) is back after a long hiatus. His previous County Players credits include: *Baby* (ENSEMBLE) and *Jekyll & Hyde* (ENSEMBLE). Other favorite roles include: *Seussical* (MAYOR), *The 39 Steps* (CLOWN2), *Godspell* (JESUS), *August: Osage County* (LITTLE CHARLES), *Veronica's Room* (MAN), *The Complete Works of William Shakespeare (abridged)* (PLAYER), *The Mystery of Edwin Drood* (BAZZARD), *The Producers* (LEO BLOOM), *The Crucible* (REVEREND HALE), *25th Annual Putnam County Spelling Bee* (LEAF CONEYBEAR), *Lend Me a Tenor* (MAX), *Cabaret* (CLIFF), *Little Shop of Horrors* (SEYMOUR) all at CT-MWP, and *Man of La Mancha* (PADRE/ANSELMO) at The CENTER for Performing Arts at Rhinebeck. Gerry is thrilled to be a part of this amazing cast in one of his all-time favorite shows! He would like to thank his beautiful wife!

AVAGRACE SIERRALEE WILSON (*Coalhouse Walker III*) is a dedicated student in the Hyde Park school district, where she excels academically while nurturing her passion for the arts. With a deep love for singing, dancing, and vacationing, AvaGrace embodies the spirit of creativity and adventure. Outside of her academic pursuits, AvaGrace hones her dance skills at the New York Academy of Ballet, where she delves into various forms of dance to express her artistic talents. Her commitment to her craft and her boundless energy make her a standout performer both onstage and in the classroom. What truly sets AvaGrace apart is her heart of gold, which radiates through her bright and joyful personality. Her infectious spirit leaves a lasting impression on everyone she encounters, spreading joy wherever she goes. **County Players Debut!**

JONAH WOODCOCK [he/him/his] (*Ensemble*) is ecstatic to be part of this production. He is excited to return to musical theatre after taking time off to earn a Mus.B. in Music Education at SUNY Fredonia. Jonah has several previous acting credits. Some of his favorite roles were *Hairspray* (EDNA TURNBLAD), *Hair* (WOOFF), and *Summer in Smoke* (VERNON). Offstage, Jonah has been known to stage direct for many operas. Outside of the arts, he can also be found playing volleyball with friends on local leagues! Jonah currently works as a server. He would like to thank his family and friends for all of their support while getting back onstage, and hopes you enjoy the show! **County Players Debut!**

DOUGLAS WOOLLEY (*J.P. Morgan, Ensemble, Set Construction Head*) has appeared in numerous County Players productions, the latest being *Freud's Last Session*. He thanks Julie, his wife, as always and forever.

ANNA MARIE PAOLERCIO (*Director*) has been involved with County Players for 40+ years, having served many years on its Board of Governors, holding several key offices, and is among the honorary lifetime members. Her extensive regional theatre résumé includes numerous stage, directing, and choreography credits. County Players directorial musical credits include *The Last Five Years*, *Memphis*, *The Marvelous Wonderettes*, *Forever Plaid*, *My Fair Lady*, *The Full Monty*, *Sweeney Todd*, *Jekyll & Hyde*, *World Goes 'Round*, *Cabaret*, *The Secret Garden*, *A Chorus Line*, *Little Shop of Horrors*, *West Side Story*, and *Oliver!* She is a retired school district administrator and enjoys spending time with her grandsons, Bentley and Trey. Special thanks: her family and friends for their love and support; the County Players Board for the opportunity to direct this amazing piece; Denise, Karen S., and Joel for joining her creative leadership team; Kathy for her production guidance; Julie and Jeanne for their assistance and patience; the cast, orchestra and the amazing production team for their hard work and dedication to present this wonderful piece of musical theatre; and our dedicated audiences for supporting the theatre arts. **For our children ... let them hear you!**

KAREN DALMER-SHEEHY (*Music Director*) is very excited to be returning to County Players, after previously serving as the music director for *Young Frankenstein* and *The 25th Annual Putnam County Spelling Bee*. She provided music direction for several other local productions, including *RENT* (CENTERstage Productions), *Something Rotten* (New Deal Creative Arts), and *Hairspray* (Newburgh Free Academy). By day, she teaches music in the Newburgh school district, where she also works as the music director for NFA's spring musical productions. Karen would like to express her sincere gratitude to the cast and crew of *Ragtime* for their trust and dedication, and to Glen, Molly, and Aidan for always being her biggest cheerleaders.

DENISE WORNELL (*Choreographer*) is excited to be at County Players working on her ninth show, having previously choreographed *Anything Goes*, *Baby*, *Pippin*, *Grease*, *Cabaret*, *The Drowsy Chaperone*, *The 25th Annual Putnam County Spelling Bee*, and *A Funny Thing Happened on the Way to the Forum*. She also choreographed other favorites in the area at Our Lady of Lourdes High School and at 90 Miles Theatre Company. Denise is a self-direction support broker and community habilitation worker and loves helping people become as independent as possible. She is thankful for all the blessings in her life. To the cast and crew, "It's been great working with you! Break a leg!"

KATHRYN BOWMAN (*Production Manager*) has exchanged her usual stage manager hat for a production manager hat. She has served on the County Players Board of Governors since 2015. "Thank you to the cast and crew for volunteering your time and talent to make magic with us." Thanks to Anna Marie, Christine, and Jody for all the guidance. Love always to Ralph, the muse's muse.

JULIE EADS WOOLLEY (*Stage Manager*) has been a fixture at County Players since 1986 when she and Doug met in *My Three Angels*. She and Doug are proud to be among the honorary lifetime members. If not onstage or backstage, you'll find Julie in the box office. She is happy and honored to work again with Anna Marie and happy to have Jeanne back working with us! Many thanks to Karen S., Denise, and Karen E. for all their hard work, and to Laurie, Dylan, and Jody for keeping the box office lights on! She welcomes all the new folks that are joining this cast for their County Players debuts, "It's so exciting, and we hope you keep coming back!" Additionally, "Thank you all for coming to support local theater! We missed you, Joel!"

JEANNE (CHARLEBOIS) JOHNSON (*Assistant Stage Manager*) is returning to County Players after a hiatus of over 30 years! Her County Players credits include stage managing *A Funny Thing Happened on the Way to the Forum* (1990), *Crimes of the Heart* (1989), and *Fifth of July* (1989). More recently she was stage manager for *Arsenic and Old Lace* at New Deal Creative Arts Center in Hyde Park, NY. Jeanne would like to thank Anna Marie and Julie for extending the offer to return to County Players and work with this fantastic cast and crew! She is thrilled to be working backstage after being a season ticket holder for many years.

YURBLE [they/them/their] (*Fight Choreographer*) is an actor, musician, and stunt performer. Training with Neutral Chaos LLC & Renaissance Academy of Performing Arts. Previous movement theatre work: *Hamlet* (HAMLET, Fight Concept; CENTERstage Productions) *Robin Hood Scenario* (Fight Corps Performer; NY Renaissance Faire) *Peter and the Starcatcher* (TEACHER/BETTY BUMBRAKE, Fight Choreographer; Up in One Productions), *Henry V* (PISTOL, Fight Captain; CENTERstage Productions), *She Kills Monsters* (ORCUS, Fight Captain; Rhinebeck Theater Society).

ERIN HEBERT (*Fight Choreographer*) began training in fight choreography during her undergrad years at Yale, training with Yale School of Drama fight choreographer, Michael Rossmly. Over the past four years, she has established herself as a go-to fight choreographer for the Hudson Valley, having fight choreographed 20+ shows in that time. Favorite credits include *She Kills Monsters*, *Henry V*, *Rebel Without a Cause*, and *Romeo & Juliet*.

HANNA MANNER (*Set Design*) marks this as her ninth design for County Players. Her previous designs were for *Who's Afraid of Virginia Woolf?*, *Wait Until Dark*, *Dirty Rotten Scoundrels*, *The Last Five Years*, *Memphis*, *The Marvelous Wonderettes*, *Aida*, and *Forever Plaid*. Hanna studied set construction and painting in Finland, and is currently an artist and healer in Dutchess County. Additional design work has been seen at The CENTER for Performing Arts at Rhinebeck, New York State Theater Institute, and Theatreworks USA. Hanna thanks Anna Marie and the crew for all the hard work they did on the set.

DONNA BETTS (*Set Décor*) notes credits that include: *Who's Afraid of Virginia Woolf?*, *My Fair Lady*, *The Full Monty*, *Sweeney Todd*, *The Woman in Black*, *And the World Goes 'Round*, *A View from the Bridge*, *Jekyll & Hyde*, and *Cabaret* (her first time backstage at County Players, also directed by Anna Marie). Other credits, most as a stage manager, include *The Marvelous Wonderettes*, *The Last Five Years*, *Hamlet*, *Les Misérables*, *A Chorus Line*, *Dirty Rotten Scoundrels*, *Falsettos*, *Hairspray*, *Singing in the Rain*, *Death of a Salesman*, *A Streetcar Named Desire*, *Mamma Mia!*, *The Raven*, *Company*, *Into the Woods*, *Oklahoma*, *A Gentlemen's Guide to Love*, and many others. She directed *A Long Day's Journey into Night* and *The Iceman Cometh* at The CENTER for Performing Arts at Rhinebeck. She is grateful to Anna Marie for giving her this opportunity to work at this great theater with a very talented cast and crew.

KEVIN BARNES (*Lighting Design*) has been active in regional amateur theater for more than 30 years. He directed 11 shows for local production companies including *Matilda*, *Mamma Mia!*, *Young Frankenstein*, *Spamalot*, *Aida*, *The 39 Steps*, *Boeing-Boeing*, and *Noises Off*. He has appeared onstage in more than 25 plays with County Players, Performing Arts of Woodstock, Pawling Theater Company, and others. He created lighting designs for over 40 shows. Kevin now works with the Stissing Theater Guild and the students of Stissing Mountain Junior/Senior High School for their school musical. He would like to thank his lovely wife, Susan, and their daughter, Ava, for the freedom to do what he loves.

MARK WEGLINSKI (*Sound Design*) is an Emmy Award winning Hudson Valley native professionally credited with the live television musicals *Annie*, *Jesus Christ Superstar*, *Hairspray*, *The WIZ*, *Peter Pan*, and *Sound of Music LIVE!* (NBC), and *A Christmas Story LIVE!* (FOX). Additional shows include Great Performances for WNET-PBS and BroadwayHD.com, Good Morning America (ABC), CMT Music Awards, MTV Video Music Awards, and live coverage of Queen Elizabeth II's 2022 Jubilee and Royal Funeral. Recent local credits include *It's Only a Play*, *Book of Will*, and *Young Frankenstein* (County Players) and *Into the Woods*, *How to Succeed...*, and *Chicago* (Marist College). Mark thanks the cast, crew, and crowd for consciously choosing to come out for the creative arts in their increasingly chaotic lives. verylimitedproductions.com

JOE PETTIGNANO (*Slideshow Graphics/Video Design*) has been involved with community theatre in the area since 2002, and has stage-managed many productions with County Players, including *Sweeney Todd*, *The Full Monty*, *My Fair Lady*, *A View from the Bridge*, and *Wait Until Dark*. Joe has served on the County Players Board of Governors since 2010 and assists with publicity, marketing, and social media. He resides in Poughkeepsie and works for Astor Services.

KAREN USTICK EREMIN (*Costume Design*) began volunteering at County Players eight years ago when her idol, mentor, and the big sister she never had, Rosemary "Bis" Evalul, invited her to join the costuming team for *Dirty Rotten Scoundrels*. Thanks to Josephine Shum for her inimitable textile engineering; Connie Boden for her bottomless trove and shared adoration of garments. Enormous welcome and appreciation to Megan Longwell and Alex Bartlett who each deserve to wear capes for their needle wizardry. "Anna Marie, Karen, Julie and remarkable cast of *Ragtime*: it's a profound honor to be in your company for this powerful show. Bis, your heart, inspiration and experience are in every stitch, inch of trim and splash of color. Love you."

ROSEMARY EVAUL (*Costume Design*), who really wanted to be a fashion designer, finally reached her goal by working costumes for County Players and Roy C. Ketcham High School's Masque & Mime Society. She has been involved with theatre at Ketcham since the early 1980s, and just more recently with County Players. She is thrilled to be working with Anna Marie and the fine cast and crew of this production. She respects all the volunteers who make County Players the great organization that it is. "Enjoy the show."

DANI MASTERSON (*Hair & Makeup Design*) has been a makeup artist for over 30 years. Her experience in productions onstage, in film, or on television is extensive, including favorites *It's Only a Play*, *Native Gardens*, *The Book of Will*, *Young Frankenstein*, *Seven Keys to Baldpate*, *Jesus Christ Superstar*, *Aida*, *Spamalot*, and *Amadeus*. County Players and Westchester Broadway Theater have been homes to both her makeup and wig design and expertise. To add to her résumé, Dani was awarded Best Hair Design for Broadway World Regional Awards 2019. Not only is she an acclaimed artist, she also added another major accomplishment last year, as she was inducted into the Buglers Hall of Fame. She also aids our Homeland Security forces as a Moulage Specialist, creating hyper-realistic SFX casualties for mock training for our service men and women.

PEGGY RINGWOOD (*Properties*) is excited to work with this talented cast and crew. She has appeared onstage in many County Players productions, most recently *An Ideal Husband* (LADY BASILDON), and headed props on many more. As always, she is grateful for her family, the County Players friends she has made, and her "Props Peeps," especially Nancy. Peggy is thankful for our returning patrons and offers prayers for those who are here in spirit. "As always, remember to have fun!"

NANCY SCRIVNER (*Properties*) has been happy to be a part of many County Players productions for over 20 years, most recently on *Young Frankenstein*. "Thank you to Anna Marie, Julie, cast, and crew. Thank you, audience members, for being a part of the family!"

TERRENCE MCNALLY (*Book*) (November 3, 1938 - March 24, 2020) had a career spanning six decades. He was inducted into the American Academy of Arts and Letters and Theater Hall of Fame, and received a Dramatists Guild, Lucille Lortel, and Special Tony Awards for Lifetime Achievement. He won Tony Awards for *Love! Valour! Compassion!*, *Master Class*, *Kiss of the Spider Woman*, and *Ragtime*. He wrote a number of TV scripts, including "Andre's Mother" (Emmy Award). He received two Guggenheim Fellowships, a Rockefeller Grant, four Drama Desk Awards, two Lucille Lortel Awards, two Obie Awards, and three Hull-Warriner Awards from the Dramatists Guild. Other plays include *Mothers and Sons*; *Lips Together, Teeth Apart*; *The Lisbon Traviata*; *Frankie and Johnny in the Clair de Lune*; *A Perfect Ganesh*; *The Visit*; *The Full Monty*; *Corpus Christi*; *Bad Habits*; *Next*; *The Ritz*; *Anastasia*; *It's Only a Play*; *Where Has Tommy Flowers Gone?*; and *The Stendhal Syndrome*.

LYNN AHRENS (*Lyrics*) won Tony, Drama Desk, and Outer Critics Circle Awards and two Grammy nominations for Broadway's *Ragtime*. For the film, *Anastasia*, she was nominated for two Academy Awards and two Golden Globes. Broadway: *Anastasia*; *Once on This Island* (Olivier Award, Best Musical; Tony nominations, Best Book and Score); *Seussical* (Grammy nomination); *My Favorite Year*; *Chita Rivera: The Dancer's Life*; *Rocky*; *Madison Square Garden's A Christmas Carol*; *Ragtime* (2010 Broadway revival). Others: Lincoln Center Theater's *Dessa Rose*, *The Glorious Ones* (both Drama Desk-nominated) and *A Man of No Importance* (Outer Critics Circle Award, Best Musical); *Lucky Stiff*; *Little Dancer* (Kennedy Center world premiere). Film and television: A "Christmas Carol" (NBC-TV); *Camp* (IFC Films); and "Schoolhouse Rock" (ABC-TV). She is a Lilly Award winner for Lyrics. Lynn has a multi-decade collaboration with composer Stephen Flaherty, both of whom are members of the Dramatists Guild Council and co-founders of the Dramatists Guild Fellows. AhrensAndFlaherty.com

STEPHEN FLAHERTY (*Music*) composed the Broadway musicals *Ragtime* (Tony, Drama Desk, OCC Awards, two Grammy nominations), *Seussical* (Grammy, Drama Desk nominations), *Once on This Island* (Tony nomination, Olivier Award, Best Musical) and *Rocky*, and at Lincoln Center Theatre: *The Glorious Ones* (OCC, Drama Desk nominations), *Dessa Rose* (OCC, Drama Desk nominations), *A Man of No Importance* (OCC, Best Musical, Drama Desk nomination) and *My Favorite Year*. Other theater includes *In Your Arms* (Old Globe), *Little Dancer* (Kennedy Center), *Lucky Stiff* (Playwrights Horizons) and *Loving Repeating: A Musical of Gertrude Stein* (Chicago's Jefferson Award, Best New Musical.) Film includes *Anastasia* (two Academy Award and two Golden Globe nominations), the documentary *After the Storm* and *Lucky Stiff*. Stephen has a multi-decade collaboration with lyricist-librettist Lynn Ahrens, both of whom are members of the Dramatists Guild Council and co-founders of the Dramatists Guild Fellows Program. AhrensAndFlaherty.com

Information in "Who's Who" is provided by those listed. Any opinions expressed are of the players and not necessarily of County Players.

CAST



Melinda Aaron



Lisa Berger



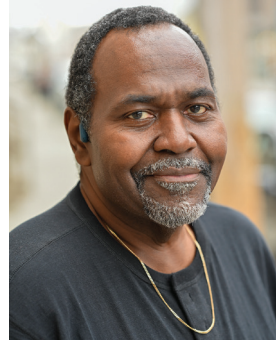
Connie E. Boden



Michael A. Boden



Andrea Buegers



Nick Butler



Antonella Delli Carpini



John H. Carter III



Cassandra D. Clarke

CAST



Mark Colvson



Bernadette Dingman



Tracy Dunstan



Ryan Dutcher



Michele George



Devin Gibbs



Robert S. Grable



Karen Hoben



Emily Holland

CAST



Quinn Jackson



James Keating



Brian Kuchcicki



John Leinung



Ceista Little-Quinn



Megan Longwell



Kiara Melendez



Glen Morrice



Janet Nurre

CAST



Vincent Peter



Samuel Petty



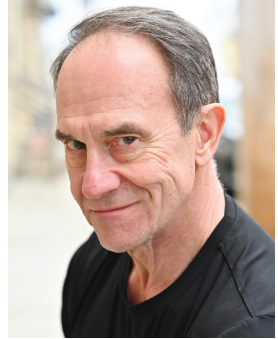
David J. Ringwood



Amy Schaffer



Laura Seaman



Richard Leonard Smith



Yvonne Tirado



Chris Tomer



Gerard Weiss, Jr.

CAST



AvaGrace Sierralee
Wilson



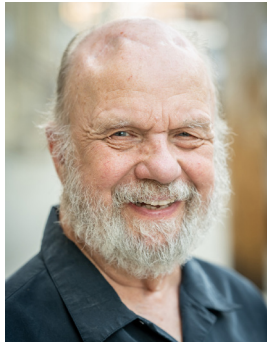
Eero Vaitkus



Jontae D. Walters



Jonah Woodcock



Douglas Woolley

Photos by Louisa Vilardi Photography.



2023 Best Community Theatre
BEST OF HUDSON VALLEY
READERS' PICKS

CREATIVE TEAM & PRODUCTION CREW FOR RAGTIME, THE MUSICAL

Director Anna Marie Paolercio
Music Director Karen Dalmer-Sheehy
Choreographer Denise Wornell
Production Manager Kathryn Bowman
Stage Manager Julie Eads Woolley
Assistant Stage Manager Jeanne (Charlebois) Johnson
Rehearsal Pianists Karen Dalmer-Sheehy, Joel Flowers
Fight Choreographers Yurble, Erin Hebert
Set Design Hanna Manner
Set Construction Douglas Woolley
Set Décor Donna Betts, Anna Marie Paolercio
Costume Design Karen Ustick Eremin, Rosemary Evaul
Lighting Design Kevin Barnes
Sound & Projections Design Mark Weglinski
Slideshow Graphics/Video Design Joe Pettignano
Hair & Makeup Design Dani Masterson
Properties Peggy Ringwood, Nancy Scrivner
Set Construction and Painting Crew Deborah Baldwin, Kevin Barnes,
Ralph Bowman, Kayel Conklin, Vince Farina, Keith Faucher, Brett Friedli,
Jeff Gershgorn, Marvin Gonzalez, Andrew Goodnow, Andy Goodnow, Nathaniel
Goodnow, Marsha Kramer, John Leinung, Hanna Manner,
Kevin Martin, Rob Meyerowitz, Anna Marie Paolercio, Silviano Reyes,
Tom Schmeelk, Alan Thomas, Mark Weglinski, Julie Eads Woolley,
Scott Woolley
Model T Ford Design and Construction Denny Evaul, John Leinung
Tateh's Pushcart Design and Construction John Leinung
Costume Crew Alex Bartlett, Connie E. Boden, Megan Longwell,
Josephine Shum
Lighting Crew Kim Barnett, Ryan King, Andrew Krauza, Marc Schroeder
Sound Crew Jeffery Battersby, Ron Bittner, Daryl Bornstein, Abigail Crocker,
Jeff Gershgorn, Jean Mazzilli, Scott Woolley
Hair & Makeup Crew Lauren Accomando, TJ Ereditairo
Properties Crew Julie Eads Woolley, John Leinung, Charlie Scrivner
Publicity/Marketing/Ads Christine Crawfis, Stacy Greenspan, Joe Pettignano,
David J. Ringwood
Publicity Photos and Production Photography Louisa Vilardi
Postcards/Programs/Brochure Christine Crawfis, Stacy Greenspan,
Joe Pettignano, Thomas G. Byrne, Louisa Vilardi
Box Office Julie Eads Woolley, Laurie Brown, Jody Coleman, Dylan Parkin
House Management Jenn Propfe

SPONSORS AND SUPPORTERS

We would like to extend our thanks to the following foundations, businesses, institutions, and individuals who have provided invaluable support.

Hudson Valley Credit Union

Jane W. Nuhn Charitable Trust

Ralph & Kathryn Bowman

Dutchess ProPrint

Facilities Maintenance Corp.

Lehan's Lawn & Landscaping Inc.

Marshall & Sterling Insurance

Powerhouse Theater at Vassar College

Stewart's Shops

The Stissing Center

Thomas, Drohan, Waxman, Petigrow & Mayle, LLP

***Our People Are
Your Best Insurance***

***Marshall
& Sterling***
INSURANCE

A 100% Employee-Owned Company

- ◆ ***Insurance for Business,
Home, Auto, Life***
- ◆ ***Group Benefits***
- ◆ ***Bonds & Specialty Risks***
- ◆ ***Wealth Management***

845-454-0800

www.marshallsterling.com
www.facebook.com/MarshallSterling

Facilities Maintenance

F.M.C



**Commercial Cleaning at
the Highest Level**

(845)454-8427

info@fincmaintenance.com

Louisa Vilardi

PHOTOGRAPHY



Children • Family • Headshots • Theatre

www.LouisaVilardiPhotography.com



Safeguard®

Jerry Martin wishes **County Players**
a great **66th Season!**

Find everything your business
needs to run and grow.

All from your personal
Safeguard Advisor.

Mention
this ad
FOR YOUR
SPECIAL
OFFER:

QuickBooks Laser Checks: **20% Off**
Business Cards: 1000 Full Color **\$65**
Envelopes: Buy 500 / Get 500 **Free**
Postcards: 1000 Full Color 4x6: **\$125**

Jerry Martin
(845) 471-4466
www.gosafeguardny.com

Bravo



to everyone at
County Players
for another
stellar season!



Sincerely,

Kit Colbourn

Associate Real Estate Broker | m. **845.224.4438**

Focus. Integrity. Results.

...a top performer in real estate...

(and seen on many local stages!)

Good to know.® bhshudsonvalley.com

KCOLBOURN@BHHSHUDSONVALLEY.COM

KITCOLBOURNREALESTATE.COM

892 MAIN STREET, FISHKILL, NY 12524

Stewart's Shops

*After the
Play*

It's Flavor Time!

stewartsshops.com   

*Ralph & Kathryn
Bowman*

BRONZE SHOW SPONSOR FOR

*Calendar
Girls*

BEST WISHES TO COUNTY PLAYERS
FOR A SUCCESSFUL 66TH SEASON!



FRED ASTAIRE
DANCE STUDIOS.

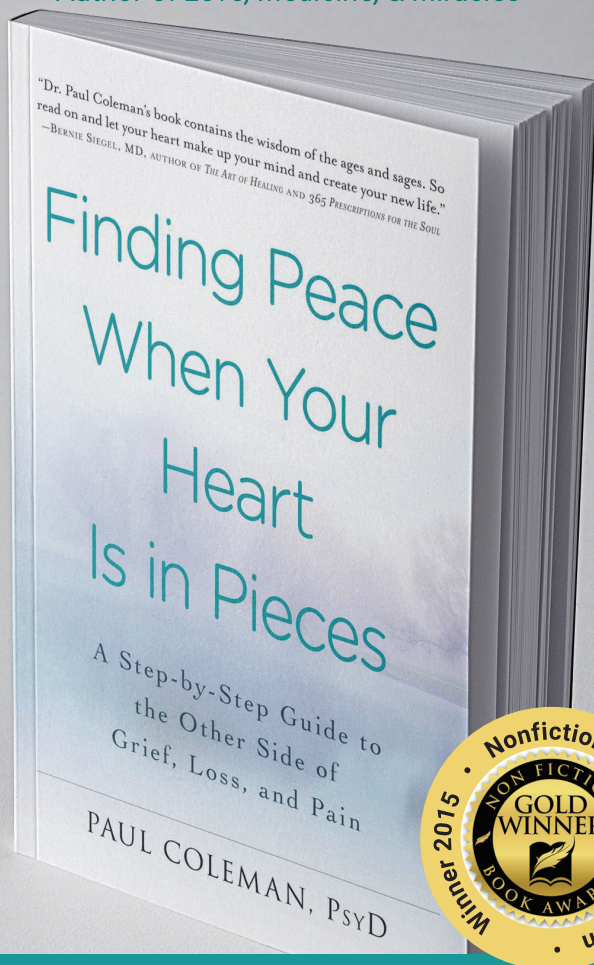
of DUTCHESS

845.297.2711

1562 Route 9

Wappingers Falls, NY

"Dr. Paul Coleman's book contains the wisdom of the ages and sages ..." - BERNIE SIEGEL, M.D.
Author of *Love, Medicine, & Miracles*



SMILE! Inner Peace is Possible.



Dr. Paul Coleman, Psychologist
Has appeared on *OPRAH* and *Today*
845-297-6198 • Paul-Coleman.com

COUNTY

— ★ *Fare* ★ —

BAR & GRILL

County Fare offers classic comfort foods locally sourced when possible. Pairing food with a rotating well curated craft beer menu, thoughtful wine list and exceptional classic cocktails.

.....

This neighborhood hang out has been carefully designed to create a comfortable, welcoming environment. Our space blends the feel of a classic pub with a casual bistro.

.....

Our mission... to welcome folks looking for a good time, to share some laughs and makes some memories



Come visit us before or after the show!



We are located 1/10 of a mile south on East Main Street.

COUNTYFAREBARANDGRILL.COM

2652 E. Main Street
Wappingers Falls, NY

845-297-3300
call for reservations

NORTHERN DUTCHESS SYMPHONY ORCHESTRA

2023/2024 SEASON

Kathleen Beckmann • Music Director



Latin Itinerary

Sunday, October 29, 2023

3:00 p.m., The Culinary Institute of America

A musical journey to Mexico, Spain, Brazil, and Peru.

Winter Wonderland

Saturday, December 2, 2023

3:00 p.m., FDR High School, Hyde Park

A magical wintry theme with your favorite holiday classics.

Fantasy Worlds

Saturday, February 10, 2024

8:00 p.m., The Culinary Institute of America

*Music from movies and shows that transport us
to extraordinary worlds.*

Genji

Saturday, April 20, 2024

7:30 p.m., Rhinebeck High School

*Featuring Genji: A Concerto for Koto and Orchestra
and other audience favorites.*


The First Ladies of Song

Saturday, June 15, 2024

7:30 p.m., Rhinebeck High School

Celebrating the music of the First Ladies of Song.

www.ndsorchestra.org • 845-635-0877 • info@ndsorchestra.org



Your Life
in the theatre begins
HERE.

June 20 - July 28, 2024

Discover your voice as an
ACTOR · DIRECTOR · WRITER
at **The Powerhouse Theatre Training Program**

Applications open from January 1 - April 1, 2024

POWERHOUSE THEATER

AT VASSAR COLLEGE

powerhouse.vassar.edu

STRAUB
CATALANO & HALVEY
FUNERAL HOME



55 East Main Street
P.O. Box 131
Wappingers Falls, New York 12590
(845) 297-2610

Kristin L. Catalano
Funeral Director

William J. Halvey
Funeral Director

“Good Luck to Cast and Crew”

VICTOR T. MITCHELL

Former DIRECTOR OF DRAMATICS for
the SEYMOUR SMITH PLAYERS and
the STISSING MOUNTAIN PLAYERS

Retired FOREIGN LANGUAGE TEACHER
Former FOREIGN LANGUAGE DEPARTMENT CHAIR

Pine Plains Central School District



Family Owned and Operated
specializing in **Mexican Cuisine.**

Lunch • Dinner • Drinks • Desserts • Brunch

Bottomless Brunch: Sat-Sun 11am-3pm

Hours: Tues-Fri 12-9pm, Sat-Sun 11am-9pm

Closed Mondays

(845) 595-8600 | casaortegany.com

32 Market Street, Wappingers Falls, NY 12590

Amelio Real Estate

Residential and Commercial

Frances J. Amelio

Licensed Broker

845-344-7548

famelio13@yahoo.com

425 East Main St

Middletown, NY

Congratulations

on the

New Season!

**Thomas, Drohan, Waxman,
Petigrow & Mayle, LLP**

Attorneys & Counselors at Law

PROVIDING
Legal Service to
Education, Municipal and
Non-Profit Clients

THROUGHOUT
THE HUDSON VALLEY

2517 Route 52
Hopewell Junction, NY 12533

845-592-7000
www.tdwpm.com



• **OVER 20 YEARS OF** •
Excellent Customer Service

Competitive Prices
Knowledgeable Staff



hopewellwinespirits.com
(845) 227-6661

410 Route 376 Hopewell
Junction, NY



LaGrange Veterinary Hospital

Providing exceptional, compassionate veterinary care
in the Hudson Valley for more than 25 years.

Marshall H. Breite, D.V.M.

Freedom Business Center
1097 Route 55
LaGrangeville, NY 12540

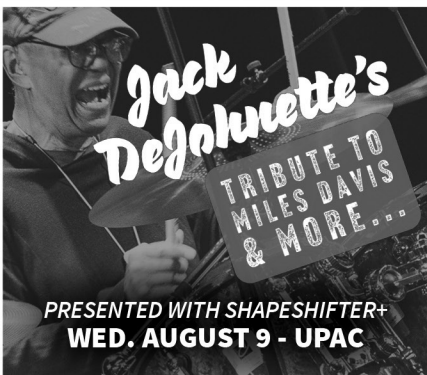
845.473.9121

WWW.**BARDAVON**.ORG



IRON & WINE

WITH HALF GRINGA
FRI. JULY 28 - UPAC

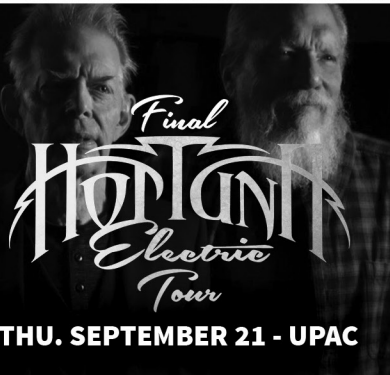


PRESENTED WITH SHAPESHIFTER+
WED. AUGUST 9 - UPAC



Croce plays Croce

SUN. SEP. 17 - BARDAVON



THU. SEPTEMBER 21 - UPAC

NEXUS

FAREWELL CONCERT



WITH PAUL WINTER & STEVE REICH
SAT. SEP. 23 - BARDAVON

GREGORY ALAN ISAKOV

WITH SPECIAL GUEST
The Milk Carton Kids

WED. OCTOBER 18 - UPAC

BARDAVON - 35 Market St Poughkeepsie • 845.473.2072

UPAC - 601 Broadway Kingston • 845.339.6088

di'Vine

WINE BAR

*Wine, Craft Beer
Small Plates*



Live Music

Fridays & Saturdays

Hours

Sun-Mon-Tues: CLOSED
Wed-Fri: 5:00 PM - 10:00 PM
Sat: 3:00 PM - 10:00 PM

845-797-5635

1 Market Street, Wappingers Falls, NY 12590
divinewinebarwappingers.com

Lehan's



Lawn & Landscaping Inc.

LAWN & PROPERTY
MAINTENANCE
LANDSCAPING
LAWN INSTALLATION

845-418-9227

lehanslandscaping.com



SERVING
DUTCHESS COUNTY

VOLUNTEER! WE NEED YOU . . .

Volunteering is a perfect opportunity to learn and experience what it takes to put on a theatrical production.



Photo by Louisa Vilardi Photography

THERE ARE MANY VOLUNTEER OPPORTUNITIES:

**Directors • Performers • Sets/Lights/Sound,
Costumes/Make-Up • Ushers • Props • Production Crews**

**FIND OUT MORE! 845-298-1491
VOLUNTEERING@COUNTYPLAYERS.ORG**



600+ Patients
One mission



Hudson Valley Hospice

Our mission is to enhance the quality of living for those at the end of life.

Let's start the conversation
(845) 485-2273 • hvhospice.org

Earn an associate degree in Performing Arts or an academic certificate in Music Performance at DCC!



ASSOCIATE DEGREE

Performing Arts

- ▶ Focus intensively in **THEATRE, DANCE, MUSIC** or a combination
- ▶ Perform in musicals, plays, dance recitals or music ensembles
- ▶ Transfer to a four-year college or audition for professional productions

CERTIFICATE PROGRAM

Music Performance

- ▶ Earn certification with or without a performing arts degree
- ▶ Take private lessons; learn music theory, aural skills and music history; and perform with ensembles

For more information contact:

Dr. Thomas Costello (tcostello@sunydutchess.edu) or
Dr. John Howell (john.howell@sunydutchess.edu)

DUTCHESS
COMMUNITY COLLEGE



SUMMER CHILDREN'S SERIES

MAY - AUGUST 2024

PAY WHAT YOU CAN AFFORD



5 professional performances created especially **FOR** young audiences! Free juice box and muffins for kids, free ice coffee for adults! Check out the

CHILDREN'S SUMMER SERIES

thestissingcenter.org

STISSING CENTER

for Arts & Culture

2950 Church Street, Pine Plains, NY 12567 thestissingcenter.org

2023-2024 SEASON DONORS

The long history and success of County Players is rooted in the people who believe that our work is worthy of their support. Subscribers/Members may choose to support our ongoing work in many ways, including donations. We wish to express our special appreciation to the following contributors of \$25 and more (list is current as of August 15, 2023).

(* = Current member of County Players Board of Governors; IMO = In Memory Of.)

STARS (\$500+)

Michael A.* & Connie E. Boden
Ralph & Kathryn* Bowman
Philip & Felicia DiNonno
Denny & Rosemary* Evaul
Robert & Jean Kaminski
Kevin Robinson
Sheila Rosewhite
Alan & Rosemary Thomas
Douglas & Julie Eads Woolley

ANGELS (\$200+)

Frances Amelio
Jeffery Battersby
James Clark
Paul & Jody* Coleman
Deborah Contini
Christine Crawfis* & Robert Miller
Roger & Linda D'Aquino
Peter & Angela Fatzinger
Keith & Terry Faucher
Michael J. Frohnhoefer*
Dick Herodes
Albert Hughes
Jeffrey Knipe
Dominic & Karen Mazza
Arthur & Cynthia Merryman
Joel & Millie Neuman
Georgette Orlando & David Weaving
Jeanne M. Pagliaro
Eugene & Jewel Ratzlaff
David J. Ringwood*
IMO Maria E. McCarthy Ringwood

BENEFACTORS (\$100+)

Michael Ballantine
Linda Beasimer
MaryAnn & Mary Beth Boylan
Laurie Brown
Kit Colbourn*
Paul & Amy Dickerman
Bill & Carol Dodge
Eileen Doherty
Vincent Eagan
Michael & Judith Elkin
David & Laura Follis
Joyce Giangrasso
Jerry & Sandy Goldberg
Leonard & Barbara Greenberg
Rose James
Bill Jordan
Bill & Doris Kennedy
Alan & Patty Little
Alice McCarthy
Leathem & Ann Mehaffey III
Victor T. Mitchell
Tom & Grace Padworski
Kenneth J. & Stephanie Parchinski
Joe Pettignano*
Brune Picchi
Joanne Prunty
Donald & Jacqueline Przytula
Ange Rapa
Arlene Reich, IMO Edward Reich
John Reifenberger
James Rockrohr
Michael & Sara Rothman
Janice Shufelt

2023-2024 SEASON DONORS (CONTINUED)

BENEFACTORS (\$100+)

Helene Stagliano

Margherita Yara

PATRONS (\$25+)

Michael & Julie Adamcek

Phyllis J. Alongi

Pat Burbridge

Fred & Michele Cantor

Richard & Kathy Carroll

Charlotte Christman

Kayel & Anna Conklin

Kayel Conklin, Sr.

Susan T. Davis

Ben & Lorraine DeClemente

Kathleen Dispensa

Vincent Farina

Debra Fauci

Martin & Grete Finkelstein

Gordon & Diane Flayter

Joe Fulton

Richard & Shirley Granda

Brenda Haase

Jean Haight

Leeann Guerrier Haubrich

Richard & Lucy Hawkins

Gerald & Sheila Hayes

Edward & Pamela Herbst

Michael Hickey

John Hughes

Daniel & Anita Jones

Cheryl Lang

Raymond & Carmen Langevin

Patricia Marsh

Rosemarie Martini

Katri McEwen

Diane Monahan

Jeanne Paino

Dylan Parkin*

Elizabeth S. Pavelka

Wesley Peterson

Judith Dolan Pretak

Norma Remick

Judy Rosenfeld

Mary Jo Ross

Charlie & Nancy Scrivner

Patricia Slattery

Janet Shaker

Mary Slavik

Liz Smith

Linda St. Martin

Joan Svenson

Joseph & Pamela Tarquinio

Lois Temple

Rosemary Thorn

Dennis Ullman

Judy Wirges

Nancy Yambem



**STACY
GREENSPAN**
GRAPHIC DESIGNER
stacy.greenspan
@gmail.com
914•572•1231



Readers Theatre
is "theatre of the mind."
No costumes. No props.
No sets. Just great
stories. Well told.



ELEANOR
UNDERNEATH THE LINTEL
CP2 MINI FESTIVAL ① OCT
2024

BABEL
MARJORIE PRIME
CP2 MINI FESTIVAL ② DEC
2024

WITCH
THE BURDENS
CP2 MINI FESTIVAL ③ MAR
2025

Constellations, 2023
Photo by Louisa Vilardi Photography.

CP2 READERS THEATRE SERIES

THREE MINI-FESTIVAL WEEKENDS

For the adventurous theatregoer:

Each weekend presents **two challenging plays** in a unique format.
A **six-show series** that challenges with as much gusto as it entertains.
Offers audiences and actors alike an opportunity to experience
theatre, underscoring its essence: **the playwright's words.**

845-298-1491 | COUNTYPLAYERS.ORG
2681 W. MAIN ST., WAPPINGERS FALLS, NY 12590

COUNTY PLAYERS BOARD OF GOVERNORS (2023-2024)



Michael A. Boden
President



Christine E. Crawfis
1st Vice President



Kit Colbourn
2nd Vice President



Jody Coleman
Secretary



Michael J. Frohnhoefer
Treasurer



Kathryn Bowman



Rosemary Evaul



Glen M. Morrice



Dylan Parkin



Joe Pettignano



David J. Ringwood



Mark Weglinski



Jeff Wilson

2023-2024 INDIVIDUAL DONORS

Donors may also choose to support our work by making an individual contribution (not associated with a subscription) during our fiscal year. We wish to express our special appreciation to the following individual contributors of \$50 and more.

(List is current from October 1, 2022 to August 15, 2023).

(* = Current member of County Players Board of Governors; IMO = In Memory Of; IHO = In Honor Of.)

(\$2500+)

Michael A. & Connie E. Boden
Anonymous
Kevin Robinson

(\$1000+)

Thomas G. Byrne
Denny & Rosemary* Evaul

(\$500+)

David & Susan Hopper
Raymond Leduc, Sr.
Alan & Rosemary Thomas

(\$250+)

Michael A.* & Connie E. Boden
Mary Ann & MaryBeth Boylan,
IHO Ralph & Kathryn Bowman
Ralph & Kathryn* Bowman
John & Ingrid Collins
Christine Crawfis* & Robert Miller
Ralph Eads
Bradford & Barbara Kendall
John & Elaine Leinung
Tom & Carol Nolan
Donald & Arlene Rider
Tom & Leslie Schmeelk
Tom & Leslie Schmeelk,
IHO Ralph & Kathryn Bowman

(\$100+)

Mr. & Mrs. James Barba
The Battersby Family
Michael A.* & Connie E. Boden,
IHO Ralph & Kathryn Bowman
Mary Ann & MaryBeth Boylan
Laurie Brown
Ann Citron
Kit Colbourn*
IHO Ralph & Kathryn Bowman
Christine Crawfis & Robert Miller,
IHO Ralph & Kathryn Bowman
Robert Ernest, IMO Carole Ernest
Vince Farina,
IHO Ralph & Kathryn Bowman
John & Marcia Gauquie
Jerry & Sandy Goldberg
Craig & Marcia Grant
John Huntington
Nancy LoCicero
Lawrence & Doris McGinley
Arthur & Cynthia Merryman
Amy Monroe,
IHO Ralph & Kathryn Bowman
Robert O'Dowd
Anna Marie Paolercio,
IHO Ralph & Kathryn Bowman
Bill & Jayne Peckham
Joe Pettignano*
Jennifer Propfe,
IHO Ralph & Kathryn Bowman
Jeff Purdy
Denise Rempe & Mark Wilson
Lowell Sanders

2023-2024 INDIVIDUAL DONORS (CONTINUED)

(\$100+)

Barbara Shelley
Timothy Sennett
Ken Straus
Theresa Supple
Roxanna Synnnett
Cathy Temple
Denise Rempe & Mark Wilson
Charlie & Nancy Scrivner,
IHO Ralph & Kathryn Bowman
Caroline Williams
Christopher White,
IHO Ralph & Kathryn Bowman
Beth Zambito
Beth Zambito,
IHO Ralph & Kathryn Bowman

(\$50+)

Roger & Linda D'Aquino,
IHO Ralph & Kathryn Bowman
Frank & Kathleen Dispensa
Donna Duessel
Bernice Edman, IMO Peter Edman
William Enichen
Michael J. Frohnhoefer*,
IHO Ralph & Kathryn Bowman
Phil & Robin Fulco
Melissa Garza
Richard & Shirley Granda
William Gunn & Joseph Jervais
Gayton, IHO Ralph &
Kathryn Bowman
Richard & Lucy Hawkins
Melinda Heady
Mary Hemingway
John Hughes
MaryJean Merando,
IHO Ralph & Kathryn Bowman
Brian Moore
William Neiman
Dennis & Donna O'Brien
Jeanne Paino

(\$50+)

Anna Marie Paolercio
Carol F. Petvai
Cal & Susan Polikoff
Judith Robbins
Eric Rosenfeld
David J. Ringwood,
IHO Ralph & Kathryn Bowman
Sharon Trocher
Eero & Tina Vaitkus
Mark Vilanti
Jeff Wilson*

HONORARY LIFETIME MEMBERS

Kevin Barnes & Sue Sciacca
Joe & Rachel Cassidy
Dilys Clark
Jody & Paul Coleman
Roger & Linda D'Aquino
Scott Diamond
Peter & Bernice Edman
Therese & William Knight
Tom & Enza Lawrence
Anna Marie Paolercio
Bill & Jayne Peckham
Joe Pettignano
Doug & Sylvia Propfe
David J. and Maria McCarthy
Ringwood
Nancy Scrivner
John T. Sloper
Jeff Wilson
Douglas & Julie Eads Woolley

ADOPT-A-SEAT DONORS

Cast & Crew of

It's Only A Play (2023)

Cast & Crew of

Native Gardens (2022)

Cast & Crew of

Seven Keys to Baldpate (2022)

Cast & Crew of

Pride and Prejudice (2021)

Cast & Crew of

The Price (2021)

Cast & Crew of

Prelude To A Kiss (2021)

Beryl Colbourn

Paul & Jody Coleman, IHO

Ralph & Kathryn Bowman

Robert Ernest

Rosemary & Denny Evaul

Robert Fiorentino

Tom Halstead & Karen Brewster

Susan Harvey

Victor T. Mitchell

Joe Prior

Bill & Jayne Peckham

David J. Ringwood,

IMO Maria McCarthy Ringwood

Jeff Wilson

ADOPT A SEAT AT COUNTY PLAYERS!

Adopting a seat at County Players is a special way to commemorate a birthday or anniversary, to make a personal contribution, a thoughtful gift, or a unique way to honor or memorialize someone's legacy.

Your contribution supports our ongoing capital improvement efforts which, in turn, allows us to continue producing the finest community theatre in the Hudson Valley. To commemorate your tax-deductible donation, we will engrave a seat plaque that features the name or text of your choice. You will receive an acknowledgement for your records and gift recipients will be notified of your gift.

Center aisle and front row seats \$300 | All other seats \$250

Contact us at 845-298-1491 for more info.



TAX DEDUCTIBLE DONATIONS

County Players is a 501(c)(3) tax-exempt organization (EIN: 14-6030877). All contributions are deductible to the extent provided by law. County Players deeply appreciates those forward-thinking individuals who include the organization in their financial and estate planning.

NOTES

NO RECORDING: The use of any audio or video recording device, and the taking of photographs, with or without flash, is strictly prohibited. Violators may be punished by ejection and violations may render the offender liable for monetary damages.

FIRE NOTICE: Fire exits are indicated by illuminated signs above the exit doors. In the event of fire or another emergency, please WALK to the nearest exit door.

TURN OFF ELECTRONIC DEVICES: The use of cellular phones, pagers, and other audible or light-emitting electronic devices is an annoyance to your fellow theater-goers and can interfere with our wireless lighting and sound systems. If you are in possession of any of these devices, please ensure they are TURNED OFF, not merely silenced, throughout the performance.

NO SMOKING: County Players At The Falls Theater is a smoke-free building. Smoking is prohibited anywhere on the premises and within 50 feet of any of the entrances.

Guests expecting **EMERGENCY MESSAGES** should notify the house manager upon their arrival at the theater.

LATECOMERS will be seated at the discretion of the management at the first appropriate interval on a space available basis.

RESTROOMS are located in the back of the theater.

EMERGENCY RESUSCITATION EQUIPMENT (AED) is located behind the refreshment counter in the lobby. County Players is designated a *Heartsafe Location* by the Dutchess County Commissioner of Health.

PARKING is at your own risk. County Players is not responsible for parking tickets, towing fees, or damage incurred to vehicles of patrons. Please obey all parking signs and regulations.

TICKETS are non-refundable. We do not accept unpaid reservations. Purchases may be made in advance or call the Box Office or online at countyplayers.org using your MasterCard, VISA, or Discover, by mailing a check at least two weeks prior to a performance.

COMMENTS AND SUGGESTIONS are welcomed by County Players. Please direct them to the House Manager who can be located through the Box Office. Policies are subject to change without notice.

DID YOU SEE OUR LAST PRODUCTIONS?



Photograph 51, (l to r) Keller Mickle, Kevin McCarthy, Morgan Hallett, Dylan Parkin, Casey Cuddy



Silent Sky, Catherine Rush



Proud to Support
**County
Players**



HudsonValley[®]
CREDIT UNION

hvcu.org | 845.463.3011

