

into the **BREECHES!**

By George Brant

Delicious celebration of love, art, and community.



**COUNTY
PLAYERS**
At the Falls Theatre

FEBRUARY 7, 8, 14, 15, 16, 21, 22

A LAUGH OUT LOUD COMEDY | Main Stage

Directed by **CHRISTINE CRAWFIS**

845-298-1491 | COUNTYPLAYERS.ORG
WAPPINGERS FALLS, NY 12590

67TH SEASON SPONSOR





Great Stories. Well Told.

WITCH MAR
THE BURDENS 2025
CP2 MINI FESTIVAL ③

BIG FISH THE MUSICAL MAY
MAIN STAGE 2025

LIPS TOGETHER, TEETH APART JUL
MAIN STAGE 2025

BULLSHOT CRUMMOND SEP
MAIN STAGE 2025

MISERY OCT
DRACULA 2025
CP2 MINI FESTIVAL ①

THE DINING ROOM NOV
MAIN STAGE 2025

MISS. BENNET: DEC
CHRISTMAS AT PEMBERLEY 2025

THE WICKHAMS:
CHRISTMAS AT PEMBERLEY
CP2 MINI FESTIVAL ②

A FEW GOOD MEN FEB
MAIN STAGE 2026

DEAR JACK, DEAR LOUISE MAR
CAMPING WITH HENRY AND TOM 2026
CP2 MINI FESTIVAL ③

SOMETHING ROTTEN! MAY
A VERY NEW MUSICAL 2026

A Funny Thing Happened On The Way To The Forum, 2023
Louisa Vilardi Photography

845-298-1491 | COUNTYPLAYERS.ORG
2681 W. MAIN ST., WAPPINGERS FALLS, NY 12590

FEBRUARY 7, 8, 14, 15, 16, 21, 22, 2025



At the Falls Theatre

PRESENTS

into the
BREECHES!
By George Brant

Directed by CHRISTINE CRAWFIS

“A gem of a play, one of the sweetest nights of theater you’re likely to see this season...a wonderful cast of characters...a lot of magical moments in this not-to-be-missed show.”

THE PROVIDENCE JOURNAL

67TH SEASON SPONSOR



INTO THE BREECHES! is presented by arrangement with
Concord Theatricals, on behalf of Samuel French, Inc. concordtheatricals.com



Dutchess ProPrint

Printing | Copying | Design | Mailing

845.298.8898

www.dutchessproprint.com

1299 Route 9 | Southside Plaza
Wappingers Falls, NY

Full Color & B/W Digital Printing & Copying
Engineering Prints & Scans (*B/W and Color*)
Mailing Services (including EDDM)
Offset Printing • Graphic Design
Vinyl Banners • Banner Stands • Displays
Posters • Laminating & Mounting
Yard Signs • Vehicle Magnets



CAST

Maggie Dalton.....	JANET E. NURRE
Celeste Fielding.....	KIT COLBOURN
Ellsworth Snow.....	PAUL COLEMAN
Winifred Snow	DEBORAH COCONIS
Stuart Lasker	DYLAN PARKIN
Ida Green	KIARA MARIE MELENDEZ JEMMOTT
June Bennett.....	KAELA ALTMAN
Grace Richards.....	MADISON ANTHONY

SYNOPSIS

The Oberon Playhouse's leading men are off at war overseas. Determined to press on, the ladies at the home front set out to produce an all-female version of Shakespeare's *Henry V*, assembling an enthusiastic yet amateur team. Will their production be a victory? Or will it be a target of disinterest and rotten tomatoes? Together they are determined that the show must go on! A hilarious and heartwarming comedy about the singular way art and community reveal our boldest selves even in the darkest times, and a love letter to theatre and the power of community.

PLACE

The Oberon Playhouse and surrounding locales in Wappingers Falls, NY

TIME

Autumn of 1942

There will be ONE 15-minute intermission.

INTO THE BREECHES! was originally commissioned by Trinity Repertory Company in Providence, Rhode Island in August 2014, and premiered on January 25, 2018. The performance was directed by Tyler Dobrowsky, with set design by Cameron Anderson, costume design by Olivera Gajic, lighting design by Porsche McGovern, and sound design by M. Florian Staab. The production stage manager was Sara Sheets. The cast was: Anne Scurria (MAGGIE DALTON), Phyllis Kay (CELESTE FIELDING), Timothy Crowe (ELLSWORTH SNOW), Janice Duclos (WINIFRED SNOW), Stephen Berenson (STUART LASKER), Lynnette Freeman (IDA GREEN), Meghan Leathers (JUNE BENNETT), and Rachael Warren (GRACE RICHARDS).

INTO THE BREECHES! was developed with generous support from the Hermitage Artist Retreat and McCarter Theatre Center's Sallie B. Goodman Artists' Retreat.

“Hilarious, heartfelt triumph...a story that is powerful, but never preachy and as heartwarming as it is fun ... a brilliant play that is fresh, witty and thoughtful...a total triumph.”

THE MONTGOMERY ADVISER

“Entertainingly captures the true meaning of being an American. Delightful and thoroughly engaging.”

ST. LOUIS POST-DISPATCH

DIRECTOR'S NOTES

In *Into the Breeches!*, the Oberon Playhouse is producing an adaptation of three plays in Shakespeare's Henriad: *Henry IV Part 1*, *Henry IV Part 2*, and *Henry V*. Here are the need-to-know characters and elements you'll hear mentioned:

- **Prince Hal (or Henry)** is the central figure in all three stories, and we watch him grow from a restless youth to the worthy King Henry V. In the final play which bears his name, he gives the famous Saint Crispin's Day speech to rally his men to action.
- **Henry IV** is Hal's father. He took the throne from Richard II by less-than-virtuous means and wishes his son was more serious about ruling England. He dies at the end of *Henry IV Part 2* after forgiving Hal for being a fool and recognizing his merit as future king.
- **Falstaff** is described as a fat, vain, and cowardly knight. He spends most of his time in taverns and is the comedic drinking companion of Prince Hal. As Henry rises to be King, he rejects Falstaff as a friend and father figure.
- **Hotspur (Henry Percy)** is a passionate army captain who leads a rebellion against Henry IV and challenges Henry's right to the throne. He dies in a glorious fight with Hal in *Henry IV Part 1*.
- **Kate Percy** is the wife of Hotspur and she hates that her husband loves war so much. She becomes a widow as a result of his hot temper and impulsiveness.
- **Princess Catherine of France**, also known as “French Kate,” only appears in *Henry V*, and her scenes provide a stark contrast to the male-driven battle and political scenes in the play. She studies English, a reflection of the growing English presence in France during the war. She ends up marrying Henry V.
- **Mistress Quickly** is the humorous mistress of Eastcheap Tavern. She and Falstaff have a wonderfully quarrelsome relationship, and she has a deep love for Falstaff and Hal.

THE PLAY WITHIN THE PLAY

- **The Chorus** plays an important part of *Henry V*, guiding the audience through the action of the play with speeches at the start of each act and urging the audience to use its imagination to set the full scene, since the theatre cannot literally represent the grandeur of the battles onstage.
- Saint Crispin's Day Speech is a famous speech in *Henry V* that includes "We few, we happy few, we band of brothers." After the English realize that they are outnumbered on the eve of the Battle of Agincourt five to one by the French army, King Henry V rouses his men by telling them that fewer men fighting means more glory for each man as they fight for England. By fighting together, they shall all be brothers. With this inspiration, the men are ready to fight the battle that they will, against all odds, win.

PROGRAM NOTES

Great theatre takes us on a journey of reflection and provocation, while embracing the value of entertainment. *Into the Breeches!* has all these elements. It's a clever, touching play celebrating women. George Brant has triangulated a theatrical celebration, a paean to women, and an ode to inclusivity, and casts them against the backdrop of the Second World War.

As you know, in Shakespeare's time, plays were performed with men in all the roles, male or female. Brant has flipped this tradition around, casting women in all the roles out of necessity during the War. *Into the Breeches!* is indeed a comedy, but this reversal is not just in service of humor. *Breeches* takes the opportunity to discuss gender roles, theatrical funding, racial issues, and class structure. When searching for a funny and thoughtful piece to complete our season, we were delighted with *Breeches* complex yet entertaining journey.

Into the Breeches! was first produced in Providence, Rhode Island, written for the Trinity Rep ensemble. But it is a perfect vehicle for our amazing theatre community here at County Players. And Brant has even permitted adaptation of the script to set it in Wappingers Falls instead of Providence. In so doing, we have learned a lot about life here in the Hudson Valley during WWII.

The celebration of theatre that is *Into the Breeches!* is an invigorating addition to our season.

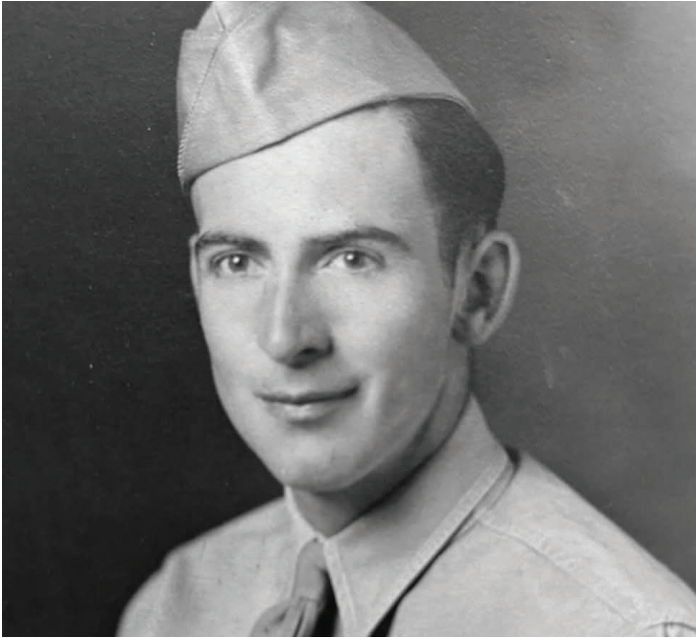
HISTORICAL SUMMARY

In the Fall of 1942, the period during which *Into the Breaches!* is set, the United States was just beginning to understand what involvement in the Second World War would mean to the American public. George Brant, by allowing productions to substitute historically accurate location references into the script, allows the cast to depict general and abstract wartime experiences at a local, concrete, and familiar level.

The experiences of Maggie, Grace, June, and Ida were far from unique in the anxious anticipation of news or letters from their husbands. In Maggie's case, her husband Andrew would have been on a destroyer during the height of the Battle of the Atlantic fighting German U-Boats, and Grace's Paul would have been participating in the first American bombing missions of the war against targets on the continent. Ida's Joshua would have most likely been with the 761st Tank Battalion, one of the only African-American combat units in the segregated United States Army of 1942, and a unit that would go on to be one of the most highly decorated US tank battalions of the war. Dutchess County was home to thousands of men who fought in the war, who left behind family and friends. For instance, the Town of Beacon saw over 1,700 men serve during the war, 67 of whom lost their lives.



Members of the 22nd Bombardment Squadron, 14th Army Air Force, India, 1942. These men would help construct the Burma Road during the war. On left, SGT John S. Masterson of Wappingers Falls.



Radioman SSG Eugene Darrigan

A poignant reminder of the losses suffered by Dutchess County servicemembers was recently publicized. On January 21, just a few short weeks ago, the Defense POW/MIA Accounting Agency announced the recovery of the remains of SSG Eugene Darrigan, after a multi-year recovery and identification effort. Darrigan is considered the first resident of Wappingers Falls to die in the war; he was declared missing after his B-24 Bomber, *Heaven Can Wait*, was shot down over Hansa Bay, New Guinea, in March of 1944.

Dutchess County, though, and particularly Southern Dutchess, was home to a significant number of industrial plants that contributed to the American war effort. Ellsworth would not have been alone in owning factories along Fishkill Creek. In particular, the area around Dennings Point was home to numerous industrial concerns, such as the New York Rubber Corporation, which employed over 500 workers at the peak of their operation – mostly women – working six-day weeks making life-rafts and other rubber products for the military. Other companies in the area, such as Bobrich or Lero-Leather Clothing, employed hundreds of workers (again, mostly women) producing different types of flying suits for the US Army Air Corps.



(l to r sitting) Deborah Coconis, Janet E. Nurre, Kiara Marie Melendez Jemmott, Steavie Hergenrader Reed, Madison Anthony, Kit Colbourn. (l to r standing) Paul Coleman, Dylan Parkin, *Into the Breeches!*, Louisa Vilardi Photography. The role of June Bennett was originally played by Steavie Hergenrader Reed.

There were other Dutchess contributions to the war effort, as well. As Ellsworth noted, the Town of Dover did initiate a war bond campaign to purchase a P-51 Mustang fighter; the aircraft was “paid for” by Spring of 1943. And, the New York branch of the Women’s Land Army operated a number of camps throughout the Hudson Valley to support agriculture during the war years, to include Camp Tuttle. Additionally, with the county being the home of the American President, other, more unique, initiatives were in place, such as dedicated observers in the Ferncliff Forest watchtowers north of Rhinebeck to provide early warning in case of an enemy air attack on FDR’s home in Hyde Park.

Of the few remaining memorials to the war, County Players was fortunate to be able to incorporate *Placid Lassie*, the C-47 aircraft currently at the Hudson Valley Regional Airport, into the production photos. There are few World War II Veterans still with us, and *Placid Lassie* is one of them, having flown two missions over Normandy on June 6, 1944, in support of the 101st Airborne Division’s glider landings, and later participating in Operation Market-Garden, the Bastogne re-supply missions, and Operation Varsity, the final Allied Airborne operation of the war. We hope that this production of *Into the Breeches!* does honor to the sacrifices, service, and memory of those Americans who served during the war.



Kit Colbourn and Janet E. Nurre, *Into the Breeches!*, Louisa Vilardi Photography



Madison Anthony and Kiara Marie Melendez Jemmott



Into the Breaches; Louisa Vifardi Photography

Kiara Marie Melendez Jemmott and Dylan Parkin



(l to r) Deborah Coconis, Janet E. Nurre, Kiara Marie Melendez Jemmott, Steavie Hergenrader Reed, Madison Anthony, Kit Colbourn



(l to r) Kiara Marie Melendez Jemmott, Kit Colbourn, Janet E. Nurre, Deborah Coconis, Paul Coleman, Madison Anthony, Steavie Hergenrader Reed, Dylan Parkin.

WHO'S WHO

(CAST, THEN CREATIVE TEAM & PRODUCTION CREW)

KAELA ALTMAN (*June Bennett*) is thrilled to join the cast of *Into the Breeches!*. Previous County Players credits include *Incorruptible*, *Native Gardens*, as well as several CP2 roles. A lifelong theatre nerd, Kaela has been performing, producing, and choreographing theater for over 20 years. "Thank you to the cast and crew of ITB for the amazing ride!"

MADISON ANTHONY [she/her/hers] (*Grace Richards*) is grateful to be a part of this production. Her previous credits include *Ms. Holmes & Ms. Watson - Apt. 2B* (Joan Watson) here at County Players, *It's a Wonderful Life* (Mary Bailey) at the CENTER for Performing Arts at Rhinebeck, and *Emilie La Marquise ... Defends Her Life Tonight* (Emilie) with Rhinebeck Theatre Society. Madison would like to thank: her family, especially her parents; Christine, for the opportunity; and the entire cast and crew, for their dedication and hard work. "Enjoy the show!"

DEBORAH COCONIS (*Winifred Snow*) is having the time of her life. Previous plays and readings with County Players include *Seven Keys to Baldpate* (Mrs. Rhodes), and *The Roommate* (Sharon). She appeared at The CENTER for Performing Arts at Rhinebeck this past year in *The Little Tragedies* (The Miser, The Stone Guest) and previously in *Into the Breeches!* (Winifred Snow). She wishes to thank Christine Crawfis, Connie and Mike Boden, Kim Barnett, Michael Frohnhofer, the talented crew, and the few, the happy few with whom she is lucky enough to share the stage tonight.

KIT COLBOURN (*Celeste Fielding*) It's not often one gets a chance to explore a role twice, and Kit is happy for another opportunity as Celeste, previously also under the direction of Christine Crawfis. County Players acting credits: *Calendar Girls* (Chris Harper), *Native Gardens* (Virginia Butley), *Our Town* (Stage Manager), *You Can't Take It with You* (Mrs. Kirby), *Dirty Rotten Scoundrels* (Muriel Eubanks), and *Chapter Two* (Jenny). Elsewhere and NYC: *The Lion in Winter* (Eleanor), *The Language Archive* (Language Instructor), *Other Desert Cities* (Polly Wyeth), *1984* (Parsons), *Blithe Spirit* (Ruth), and *Tartuffe* (Elmire). Kit serves on the County Players Board of Governors and directed *It's Only a Play*, *Photograph 51*, *Yankee Tavern*, *Almost, Maine*, *Seven Keys to Baldpate*, and *Incorruptible*. She earned a B.A. in Theatre from FSU, and is an Associate Broker (Realtor) at Berkshire Hathaway HomeServices. "Many thanks to this talented cast, our amazing production staff, family, friends, and everyone who supports live theatre in any way!"

PAUL COLEMAN (*Ellsworth Snow*) is delighted to be back on stage after a two-year absence. Paul is a local psychologist and the author of numerous books, including "Finding Peace When Your Heart Is in Pieces." He appeared in the HBO mini-series "I Know This Much Is True" (Support Group Counselor). Some of his favorite County Players performances include *It's Only a Play* (Ira), *Almost, Maine* (East), *Boeing, Boeing* (Berthe), and *Noises Off* (Selsdon).

Special thanks to Christine, Mike, Kim, the technical crew, and the fine actors he feels privileged to share the stage with. And thanks to his wife Jody for her inexhaustible love and support.

KIARA MARIE MELENDEZ JEMMOTT (*Ida Green*) is a young actress, singer, and dancer. She was involved in the County Players productions of *Ragtime* and *Incorruptible*, and has experience in various film projects. She is grateful to be able to continue learning and growing in the theatre and as a part of the County Players family. It is her goal to improve her craft as well as herself as much as possible, and to bring authenticity and soul to every role.

JANET E. NURRE (*Maggie Dalton*) has appeared in many previous County Players productions, most recently *Ms. Holmes & Ms. Watson - Apt. 2B* (various), *Ragtime* (Ensemble), and *Calendar Girls* (Jessie). Other recent credits include *Romeo and Juliet* (Lady Montague) with Brewster Theater Company, *The Language Archive* (Emma) with CENTERstage Productions, and *Constellations* (Marianne) with Rosendale Theater Collective. Janet is a proud member of SHINee World and BTS ARMY. She is grateful to her allies and accomplices, and the patrons, donors and volunteers who cultivate the Hudson Valley arts community.

DYLAN PARKIN [he/him/his] (*Stuart Lasker*) started volunteering at County Players in 2017 and has since been involved in several productions including *Perfect Arrangement* (Jim Baxter), *Silent Sky* (Peter Shaw), *Constellations* (Roland), *Calendar Girls* (Lawrence Sugden), *The Drowsy Chaperone* (Man in Chair), and *Dirty Rotten Scoundrels* (Freddy Benson). Local credits also include *Braille Garden* (Gus) and *The Covid Confessions* (Daniel) at The CENTER for Performing Arts at Rhinebeck, *The Weekend People* (Colin) at Round the Bend Theater, *Into the Woods* (Baker) and *Tough Love* (Danny Marino) at New Deal Creative Arts Center, and *Ex-Gay Bar* (Jack/Sebastian) with both Howl Playwrights and ArtsWestchester. He also directed for and performed in the inaugural Hudson Valley Theatre Festival. Dylan holds a bachelor's degree in Food Science from the Culinary Institute of America and works for an ice cream manufacturer in Congers, NY. He also serves on the County Players Board of Governors.

CHRISTINE CRAWFIS (*Director*) directing credits include *She Kills Monsters* (Hotchkiss School), *Constellations* (Tangent Theatre), *Peter and the Starcatcher*, *August: Osage County* (Marist University), *The Big Meal* (SUNY Ulster), *Grounded*, *Every Brilliant Thing* (Rosendale Theatre Collective), *Sganarelle* (Asolo Repertory), *Line* (Cubiculo Theatre), *Little Shop of Horrors*, *The Diviners* (Riverfront Theatre), *Guys and Dolls*, *Born Yesterday*, *August: Osage County*, *Prelude to a Kiss*, *Native Gardens*, *In a Word* (County Players), *Into the Breeches!*, *The Language Archive*, *Braille Garden* (The CENTER for Performing Arts at Rhinebeck), and *Wit* (Mohonk Mountain Stage Company). She serves as

Adjunct Professor at Marist University, and Professor of Practice in Bay Path University's Graduate School of Nonprofit Management and Philanthropy. She has lived in the Hudson Valley since 1991 with her husband, Robert Miller, three children, four grandchildren, and numerous pets. She currently serves as 1st Vice President on the County Players Board of Governors. "Thanks to everyone at County Players."

MICHAEL J. FROHNHOEFER (*Production Manager, Scenic Designer, Set Décor*) is happy to be part of this great team. Previous designs include *Incorruptible*, *An Ideal Husband*, *It's Only a Play*, and *Pride and Prejudice*. "Thanks to the construction and décor teams for bringing this to life; without you, it would not be possible."

MIKE BODEN (*Stage Manager*) is honored to be a part of this great production team! He has been involved in multiple County Players productions, both on-stage and as crew. Notable productions include *Ragtime* (Ensemble), *A Funny Thing Happened on the Way to the Forum* (Marcus Lycus), *It's Only a Play* (stage manager), and *The Drowsy Chaperone* (Feldzeitig), as well as *Kinky Boots* (Mr. Price) at Dutchess Community College, where he teaches history. Mike served 23 years as an armored cavalryman in the US Army. "Congrats to the entire cast and crew for their fantastic work on this show. Love always to Connie. Go Army, Beat Navy!"

KIM BARNETT (*Assistant Stage Manager*) is excited to be a part of this production. Recent crew credits: stage manager for *Perfect Arrangement*, assistant stage manager for *Calendar Girls*, *Who's Afraid of Virginia Woolf?*, and *Almost, Maine*, and board operator for many County Players musicals (*Ragtime*, *A Funny Thing Happened on the Way to the Forum*, *Young Frankenstein*, *The Drowsy Chaperone*). Additionally, at The CENTER for Performing Arts at Rhinebeck, she served as stage manager (*Cabaret*) and dresser (*Into the Breches!*). When not at the theater, Kim can be found playing with her energetic Dalmatian dog, Tango, waltzing the night away at the Fred Astaire Dance Studios where she has been taking ballroom dancing for over ten years, or spending time with her granddaughter, Keira, and grandson, Finn. She thanks her family and friends for their love and support, especially her mother, Pat, who travels from Atlanta several times a year to see County Players productions.

PARKER REED (*Fight Choreographer*) greatly appreciates another opportunity to collaborate with County Players. He teaches, directs, and performs in and around the northwest corner of Connecticut, always with the desire to connect people and quicken pulses. He's very grateful to the audience members for believing in the magic of the spoken word.

CONNIE E. BODEN (*Costume Designer*) has been involved in over 20 County Players productions, on- and off-stage since 2018, her favorites being *An Ideal Husband* (Lady Markby) and *A Funny Thing Happened on the Way to the*

Forum (Gymnasia/Costume Designer). Recent costume design credits include: *Incorruptible*, *The Humans*, *Calendar Girls*, *It's Only a Play*, and *The Book of Will* with County Players, and *Into the Breeches!* with the CENTER for Performing Arts at Rhinebeck. Connie earned an M.A. in English Literature from Hofstra University, and works as a docent at the Locust Grove estate. "Thanks to the entire cast and crew for their wonderful work on this show."

DANI MASTERSON (*Hair & Makeup Designer*) has been a makeup artist for over 30 years. Her experience in productions on stage, in film, or on television is extensive, including favorites *Ragtime*, *A Funny Thing Happened on the Way to the Forum*, *It's Only a Play*, *Native Gardens*, *The Book of Will*, *Young Frankenstein*, *Seven Keys to Baldpate*, *Jesus Christ Superstar*, *Aida*, *Spamalot*, and *Amadeus*. County Players and Westchester Broadway Theater have been homes to both her makeup and wig design and expertise. To add to her resume, Dani was awarded Best Hair Design for Broadway World Regional Awards 2019. Not only is she an acclaimed artist, she also added another major accomplishment last year, as she was inducted into the Buglers Hall of Fame. She also aids our Homeland Security forces as a Moulage Specialist, creating hyper-realistic SFX casualties for mock training for our service men and women.

PEGGY RINGWOOD (*Properties*) is excited to work with this talented cast and crew. She has appeared onstage in many County Players productions, most recently *An Ideal Husband* (Lady Basildon), and headed props on many more. As always, she is grateful for her family, the County Players friends she has made, and her "Props Peeps," especially Nancy. Peggy is thankful for our returning patrons and offers prayers for those who are here in spirit. "Always remember, 'Have fun!'"

NANCY SCRIVNER (*Properties*) has been happy to be a part of many County Players productions for over 20 years, most recently on *Incorruptible*. "Thank you to this cast and crew. Thank you, audience members, for being a part of the family."

MARC SCHROEDER (*Lighting Designer*) previously designed the lighting for the County Players' productions of *Incorruptible*, *Ms. Holmes & Ms. Watson - Apt. 2B*, *An Ideal Husband*, *Calendar Girls*, *On Golden Pond*, *A Funny Thing Happened on the Way to the Forum*, *It's Only a Play*, *Native Gardens*, *Seven Keys to Baldpate*, *The Price*, *Prelude to a Kiss*, *Pride and Prejudice*, *The 25th Annual Putnam County Spelling Bee*, *Moonlight and Magnolias*, *In a Word*, *The Weir*, *Yankee Tavern*, *Our Town*, *A Christmas Tuna*, *Guys and Dolls*, *Dirty Rotten Scoundrels*, *Godspell*, *Marvin's Room*, *All My Sons*, *Doubt*, and *Of Mice and Men*.

MARK WEGLINSKI (*Sound Designer*) is an Emmy Award winning Hudson Valley native and audio engineer professionally credited with the live television musicals *Annie*, *Jesus Christ Superstar*, *Hairspray*, *The WIZ*, *Peter Pan*, and *Sound of Music LIVE!* (NBC), and *A Christmas Story LIVE!* (FOX). Additional

shows include *Great Performances* for WNET-PBS and BroadwayHD.com, *Good Morning America's Summer Concert Series* (ABC), *CMT Music Awards*, *MTV Video Music Awards*, *The 77th Tony Awards* (CBS), plus live coverage of the State of the Union and this year's political conventions and debates for ABC and NewsNation. Local credits include numerous productions at County Players, The CENTER for Performing Arts at Rhinebeck, and Marist College. Mark is a member of the County Players Board of Governors and would like to thank the patrons, performers, and personnel for choosing to make time and space in their lives for the collaborative art of theatre. verylimitedproductions.com

GEORGE BRANT (*Playwright*) plays include *Grounded*, *Marie and Rosetta*, *Into the Breeches!*, *The Prince of Providence*, *Elephant's Graveyard*, *The Land of Oz*, *Tender Age*, *The Mourners' Bench*, *Any Other Name*, *Salvage*, and *Grizzly Mama*. An Affiliate Writer at the Playwrights' Center, his scripts have been produced internationally by such companies as the Public Theater, the Atlantic Theater Company, Cleveland Play House, Trinity Repertory Company, the Studio Theatre, Alley Theatre, Asolo Repertory, London's Gate Theatre, Page 73 and the Traverse Theatre. His plays have received a Lucille Lortel Award, an Edgerton Foundation New Play Award, the Smith Prize, a Fringe First Award, an Off-West End Theatre Award, an NNPN Rolling World Premiere, four OAC Individual Excellence Awards, and the Keene Prize for Literature. George received his MFA in Writing from the Michener Center at UT-Austin and is a member of the Dramatists Guild.

Information in "Who's Who" is provided by those listed. Any opinions expressed are of the players and not necessarily of County Players.

SPECIAL THANKS

The Tunison Foundation, Sherry Fuller, all the volunteers who helped with the PR photo shoot on January 13, 2025, and especially *Placid Lassie*. Eileen Curley, Denny and Rosemary Evaul, Rocky Love, and Marist University.

Thank you!

Thanks to Sherry Fuller and the staff and volunteers of The Tunison Foundation for their generosity in allowing the cast of *Into The Breeches!* to spend an evening with *Placid Lassie*.



The cast and production crew of *Into The Breeches!*, the staff and volunteers of The Tunison Foundation, and *Placid Lassie*.
Louisa Vilardi Photography



TO INTERACT WITH THE TUNISON FOUNDATION IN PERSON:

Find out when and where you can meet our C-47 when she is on tour, or become a Volunteer to work at our POU base and on the road.

(401) 529-6879 | tunisonfoundation.org

Enjoy the show!
+
Stop by before or after for all of your favorite sweets!

Located at 2651 E Main Street
Wappingers Falls, NY

www.quincyscandyshop.com

SPONSORS AND SUPPORTERS

We would like to extend our thanks to the following foundations, businesses, institutions, and individuals who have provided invaluable support.

Hudson Valley Credit Union

Jane W. Nuhn Charitable Trust

Ralph & Kathryn Bowman

Dutchess ProPrint

Facilities Maintenance Corp.

Powerhouse Theater at Vassar College

Stewart's Shops

The Stissing Center



Stewart's Shops

*After the
Play*

It's Flavor Time!

stewartsshops.com   

CAST



Kaela Altman



Madison Anthony



Deborah Coconis



Kit Colbourn



Paul Coleman



Kiara Marie
Melendez Jemmott



Janet E. Nurre



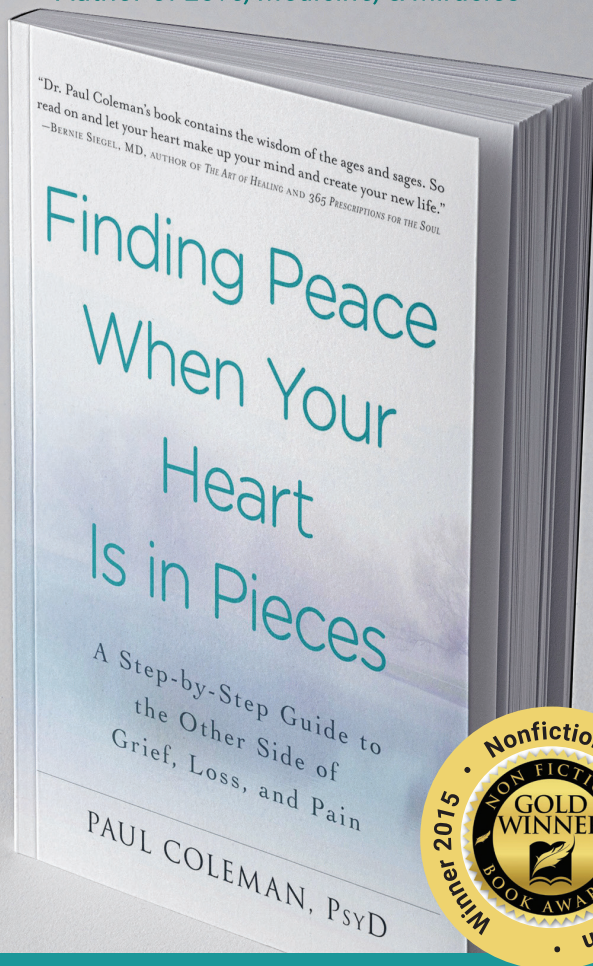
Dylan Parkin

Louisa Vilardi Photography

CREATIVE TEAM & PRODUCTION CREW FOR INTO THE BREECHES

Director Christine Crawfis
Production ManagerMichael J. Frohnhoefer
Stage Manager Mike Boden
Assistant Stage Manager Kim Barnett
Fight Choreographer, Text Consultant..... Parker Reed
Scenic Designer.....Michael J. Frohnhoefer
Set DécorMichael J. Frohnhoefer
Set Construction HeadsMark Weglinski
Set Construction and Painting Crew Deborah Baldwin, Liam Botsford,
Ralph Bowman, Bill Bracey, Jody Coleman, Kayel Conklin, Tim Durniak,
Tom Elliott, Vincent Farina, Marsha Kramer, John Leinung, Kevin Martin,
Thomas Schmeelk, Liz Sparracio, Alan Thomas, Scott Woolley
Costume Designer Connie E. Boden
Costume Crew Alex Bartlett, Donna Conway, Vinnie Cuccia,
Rosemary Evaul, Josephine Shum
Dressers..... Connie Boden, Donna Conway, Vinnie Cuccia
Properties..... Peggy Ringwood, Nancy Scrivner
Lighting Designer.....Marc Schroeder
Lighting Crew Kevin Barnes, Jeff Gottesfeld, Ryan King, Mark Weglinski,
Jeff Wilson
Sound DesignerMark Weglinski
Board Operators.....Elizabeth Crew, Scott Woolley
Hair & Makeup DesignerDani Masterson
Hair & Makeup Crew.....Lauren Accomando, TJ Ereditairo
Marketing.....Joe Pettignano, David Ringwood
Publicity/Marketing/Ads.....Thomas G. Byrne, Christine Crawfis,
Stacy Greenspan, Joe Pettignano, David J. Ringwood
Production and Publicity Photography.....Louisa Vilardi
Postcards/Programs/Brochure.....Thomas G. Byrne, Christine Crawfis,
Stacy Greenspan, Joe Pettignano, Louisa Vilardi
Box OfficeJulie Eads Woolley
House Manager..... Jenn Propfe

"Dr. Paul Coleman's book contains the wisdom of the ages and sages ..." - BERNIE SIEGEL, M.D.
Author of *Love, Medicine, & Miracles*



SMILE! Inner Peace is Possible.



Dr. Paul Coleman, Psychologist
Has appeared on *OPRAH* and *Today*
845-297-6198 • Paul-Coleman.com

COUNTY

— ★ *Fare* ★ —

BAR & GRILL

County Fare offers classic comfort foods locally sourced when possible. Pairing food with a rotating well curated craft beer menu, thoughtful wine list and exceptional classic cocktails.

.....

This neighborhood hang out has been carefully designed to create a comfortable, welcoming environment. Our space blends the feel of a classic pub with a casual bistro.

.....

Our mission... to welcome folks looking for a good time, to share some laughs and makes some memories



Come visit us before or after the show!



We are located 1/10 of a mile south on East Main Street.

COUNTYFAREBARANDGRILL.COM

2652 E. Main Street
Wappingers Falls, NY

845-297-3300
call for reservations

Louisa Vilardi

PHOTOGRAPHY



Children • Family • Headshots • Theatre

www.LouisaVilardiPhotography.com

Bravo



to everyone at
County Players
for another
stellar season!



Sincerely

Kit Colbourn

Associate Real Estate Broker | m. 845.224.4438

Focus. Integrity. Results.

...a top performer in real estate...
(and seen on many local stages!)

Good to know.® bhshudsonvalley.com

KCOLBOURN@BHHSHUDSONVALLEY.COM
KITCOLBOURNREALESTATE.COM
892 MAIN STREET, FISHKILL, NY 12524

STACY GREENSPAN

BRANDING COLLATERAL

PRINT MATERIAL

BROCHURES

SOCIAL MEDIA GRAPHICS

BOOK COVERS

PACKAGING

LOGOS

stacy.greenspan@gmail.com

GRAPHIC DESIGNER



Jerry Martin wishes County Players a great 67th Season!

Find everything your business needs to run and grow. All from your personal Safeguard Advisor.

Mention this ad FOR YOUR SPECIAL OFFER:

QuickBooks Laser Checks: 20% Off Business Cards: 1000 Full Color \$65 Envelopes: Buy 500 / Get 500 Free Postcards: 1000 Full Color 4x6: \$125

Jerry Martin (845) 471-4466 www.gosafeguardny.com



Hudson Valley's Premier British Savory Pies

845-253-3580

braisedpies@gmail.com

2665 E Main St Wappingers Falls, NY



GET THE SCOOP ON A GROUP | SAVE UP TO 20%*

Enjoy a discount* on tickets OR turn any County Players' performance into a fundraising event.

*Groups of 12-24: Save 15%; Groups of 25+: Save 20%. An individual group representative must purchase all ADULT tickets for the same performance of 12 or more in a single purchase.

Ragtime, 2024. Louisa Vilardi Photography.

RESERVE YOUR GROUP TICKETS TODAY! BOX OFFICE: 845-298-1491



Amelio

Real Estate

Residential and Commercial

Frances J. Amelio

Licensed Broker

845-344-7548

fjamelio13@yahoo.com

425 East Main St
Middletown, NY

Congratulations

on the

New Season!

“Good Luck to Cast and Crew”

VICTOR T. MITCHELL

Former DIRECTOR OF DRAMATICS for
the SEYMOUR SMITH PLAYERS and
the STISSING MOUNTAIN PLAYERS

Retired FOREIGN LANGUAGE TEACHER
Former FOREIGN LANGUAGE DEPARTMENT CHAIR

Pine Plains Central School District



RESTAURANT
EST.2021

Family Owned and Operated
specializing in **Mexican Cuisine.**

Lunch • Dinner • Drinks • Desserts • Brunch

Bottomless Brunch: Sat-Sun 11am-3pm

Hours: Tues-Fri 12-9pm, Sat-Sun 11am-9pm

Closed Mondays

(845) 595-8600 | casaortegany.com

32 Market Street, Wappingers Falls, NY 12590

NORTHERN DUTCHESS SYMPHONY ORCHESTRA

2024/2025 SEASON

Kathleen Beckmann • Music Director



The Golden Age of Hollywood

Sunday, October 27, 2024

4:00 p.m., The Culinary Institute of America, Hyde Park

Featuring iconic scores from Casablanca, Sunset Boulevard, and more!

Home for the Holidays

Saturday, December 7, 2024

4:00 p.m., FDR High School, Staatsburg

There's no place like home and NDSO for the holidays!

Disney and Zimmer

Saturday, February 8, 2025

7:30 p.m., The Culinary Institute of America, Hyde Park

A blockbuster evening of movie hits from Disney and Hans Zimmer.

An Organ in the House

Saturday, April 5, 2025

7:30 p.m., The Culinary Institute of America, Hyde Park

Travel back in time to the silent film era with a theater organ joining the orchestra.

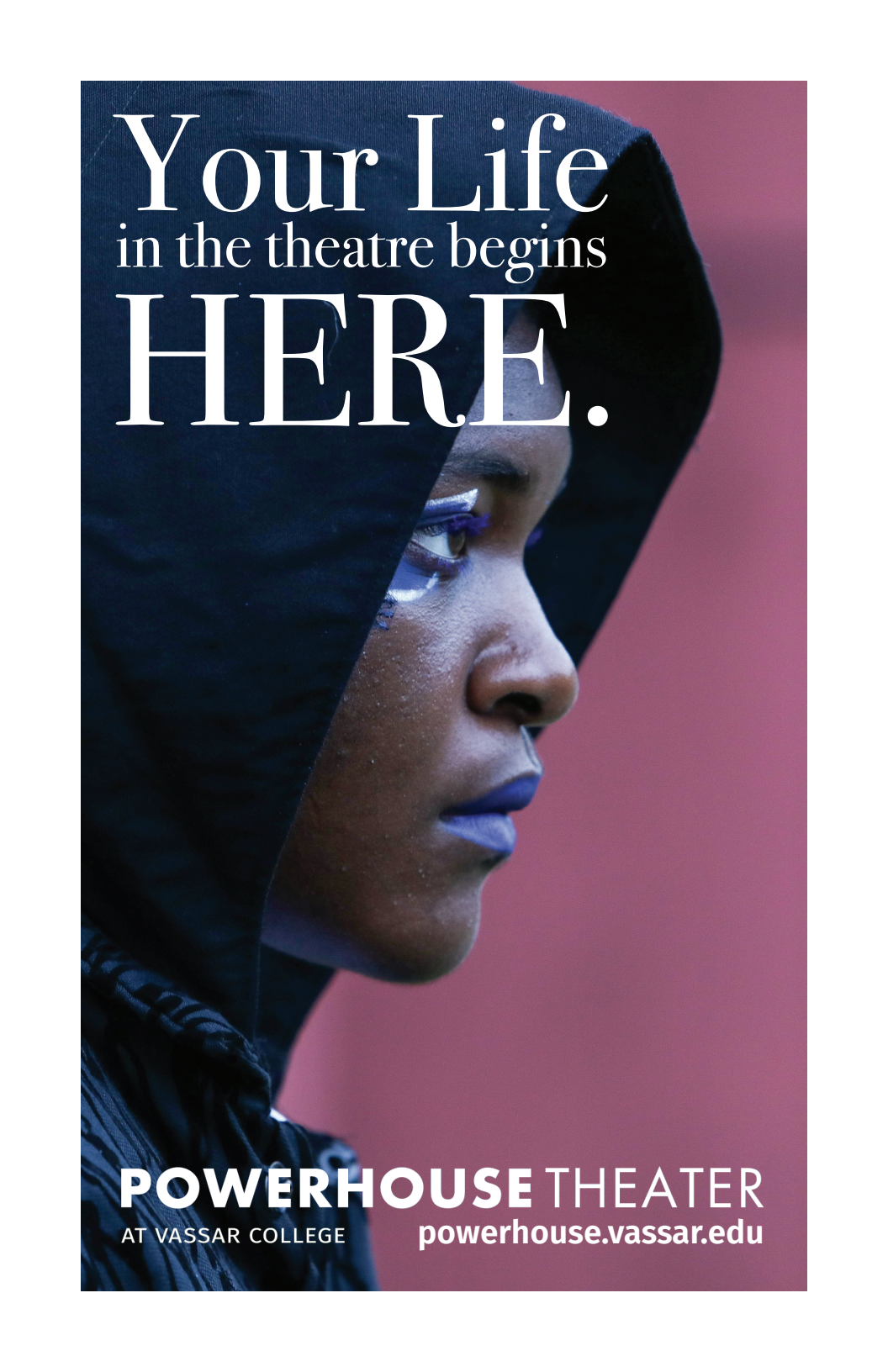
Music of the Knights

Saturday, June 14, 2025

7:30 p.m., The PAC at Red Hook High School, Red Hook

Honoring the musical careers of Sir Andrew Lloyd Webber, Sir Elton John and Sir Paul McCartney.

www.ndsorchestra.org • 845-635-0877 • info@ndsorchestra.org



Your Life
in the theatre begins
HERE.

POWERHOUSE THEATER

AT VASSAR COLLEGE

powerhouse.vassar.edu

STRAUB
CATALANO & HALVEY
FUNERAL HOME



55 East Main Street
P.O. Box 131
Wappingers Falls, New York 12590
(845) 297-2610

Kristin L. Catalano
Funeral Director

William J. Halvey
Funeral Director



LaGrange Veterinary Hospital

Providing exceptional, compassionate veterinary care
in the Hudson Valley for more than 25 years.

Marshall H. Breite, D.V.M.

Freedom Business Center
1097 Route 55
LaGrangeville, NY 12540

845.473.9121



- OVER 20 YEARS OF •
- Excellent Customer Service
- Competitive Prices
- Knowledgeable Staff



hopewellwinespirits.com

(845) 227-6661

410 Route 376 Hopewell
Junction, NY



FRED ASTAIRE
DANCE STUDIOS.

of DUTCHESS

845.297.2711

1562 Route 9

Wappingers Falls, NY



We can help you design your dream bathroom with stylish safety features, on trend designs and affordability.

**Contact us today for a free
in-home design consultation.**

**BATHS BY
SCHNORR**

845-632-0202

We are proud to support County Players.

www.bathsby Schnorr.com

LICENSED AND INSURED

Thomas, Drohan, Waxman,
Petigrow & Mayle, LLP

Attorneys & Counselors at Law

PROVIDING
Legal Service to
Education, Municipal and
Non-Profit Clients

THROUGHOUT
THE HUDSON VALLEY

2517 Route 52
Hopewell Junction, NY 12533

845-592-7000
www.tdwpm.com

Ralph & Kathryn
Bowman

Bronze Show Sponsor for
INCORRUPTIBLE

— By Michael Hollinger —



Best wishes to County Players
for a successful 67th Season!



MEET OUR VOLUNTEERS!

JOIN OUR TEAM

EXPLORE NEW SKILLS, MAKE NEW FRIENDS,
AND SHARE IN THE MAGIC OF BRINGING OUR
AWARD WINNING PRODUCTIONS TO LIFE.



**VOLUNTEER
OPPORTUNITIES:**
Directors • Performers
Sets/Lights/Sound
Costumes/Make-Up
Ushers • Props
Production Crews

**COUNTY
PLAYERS**

FIND OUT MORE! 845-298-1491
COUNTYPLAYERS.ORG /VOLUNTEERS

Louisa Vilardi Photography.

What is Hospice?



It's quality time with the ones we love.

It's focusing on the quality of time, not the quantity. It's spending precious moments with loved ones and making new memories.

Hudson Valley
Hospice

We're here when it matters most.

hvospice.org • 845-240-7555

Facilities Maintenance

F.M.C



Commercial Cleaning at
the Highest Level

(845)454-8427

info@fmcmaintenance.com

di'Vine

WINE BAR

*Wine, Craft Beer
Small Plates*



Live Music

Fridays & Saturdays

Hours

Sun-Mon-Tues: CLOSED
Wed-Fri: 5:00 PM - 10:00 PM
Sat: 3:00 PM - 10:00 PM

845-797-5635

1 Market Street, Wappingers Falls, NY 12590

divinewinebarwappingers.com



EDUCATIONAL EVENTS SEASON 67

FOR ALL EXPERIENCE
AND INTEREST LEVELS

FALL WORKSHOP

Saturday | **NOVEMBER 9, 2024** | 10am - 4pm

The Michael Chekov Technique:

Psychological gestures for character development

SPRING WORKSHOPS

Saturday | **FEBRUARY 8, 2025** | 10am - 4pm

Directing & Acting in Readers Theatre

Saturday | **MARCH 22, 2025** | 10am - 4pm

Stage Management

FOR MORE INFORMATION AND REGISTRATION
VISIT COUNTYPLAYERS.ORG

**COUNTY
PLAYERS**
At the Falls Theatre

Earn an associate degree in Performing Arts or an academic certificate in Music Performance at DCC!



ASSOCIATE DEGREE

Performing Arts

- ▶ Focus intensively in **THEATRE, DANCE, MUSIC** or a combination
- ▶ Perform in musicals, plays, dance recitals or music ensembles
- ▶ Transfer to a four-year college or audition for professional productions

CERTIFICATE PROGRAM

Music Performance

- ▶ Earn certification with or without a performing arts degree
- ▶ Take private lessons; learn music theory, aural skills and music history; and perform with ensembles

For more information contact:

Dr. Thomas Costello (tcostello@sunydutchess.edu) or
Dr. John Howell (john.howell@sunydutchess.edu)

DUTCHESS
COMMUNITY COLLEGE

Congratulations on your 67th Season!
Bravo!



STISSING CENTER
for Arts & Culture

**WORLD-CLASS PROGRAMMING
IN THE HEART OF PINE PLAINS!**

2950 CHURCH STREET
PINE PLAINS, NY 12567



BARDAVON PRESENTS



BRUCE HORNSBY
& THE NOISEMAKERS
JUNE 29 - UPAC



THE MOODY BLUES
John Lodge
JULY 29 - BARDAVON



CAT POWER
SINGS DYLAN
SEPTEMBER 7 - UPAC



BRITISHMANIA
SEPT. 21 - BARDAVON



ESCAPE &
BEST OF TIMES
A TRIBUTE TO JOURNEY & STYX
SEPT. 27 - BARDAVON



Jack DeJohnette
Solo Piano
SEPTEMBER 28 - W DSTK PLAYHOUSE



Disney
ENCANTO
THE SING-ALONG FILM CONCERT
SEPTEMBER 29 - UPAC



SUZANNE VEGA
OLD SONGS, NEW SONGS AND OTHER SONGS
OCT. 4 - OLD DUTCH CHURCH



CAPITOL
FOOLS
NOVEMBER 1 - BARDAVON



State Ballet Theatre of Ukraine
Sleeping Beauty
NOVEMBER 8 - UPAC



SAMMY SPAE &
THE FRIENDS
NOVEMBER 11 - UPAC



PATTI SMITH
AND *Friends*
NOVEMBER 16 - UPAC

BARDAVON - 35 Market Street, Poughkeepsie • 845.473.2072
Bardavon Presents at **UPAC** - 601 Broadway, Kingston • 845.339.6088

2024-2025 SEASON DONORS

The long history and success of County Players is rooted in the people who believe that our work is worthy of their support. Subscribers (*i.e.*, members) may choose to support our ongoing work in many ways, including donations. We wish to express our special appreciation to the following contributors of \$25 and more (list is current as of August 1, 2024).

(*= Current member of County Players Board of Governors; IMO=In Memory Of.)

STARS (\$500+)

Philip & Felicia DiNonno
Denny & Rosemary* Evaul
Kevin Robinson
Sheila Rosewhite
Alan & Rosemary Thomas
Douglas & Julie Eads Woolley

ANGELS (\$200+)

Donald & Jacqueline Przytula
Eugene & Jewel Ratzlaff
David J. Ringwood*
IMO Maria E. McCarthy Ringwood
Janice Shufelt
Helene Stagliano

ANGELS (\$200+)

Frances Amelio
Michael & Rita Ballantine
Jeffery Battersby
Ralph & Kathryn Bowman
James Clark
Paul & Jody* Coleman
Alex & Debbie Contini
Christine Crawfis* & Robert Miller
Michael & Judi Elkin
Peter & Angela Fatzinger
Michael J. Frohnhoefer*
Dick Herodes
Albert Hughes
Robert & Jean Kaminski
Jeff Knipe
John & Elaine Leinung
Dominic & Karen Mazza
Arthur & Cynthia Merryman
Joel & Millie Neuman
Georgette Orlando & David Weaving
Jeanne M. Pagliaro
Doug & Sylvia Propfe

BENEFACTORS (\$100+)

Linda Beasimer
MaryAnn & Mary Beth Boylan
Laurie Brown
Richard & Judith Carson
Kit Colbourn*
Paul & Amy Dickerman
Frank & Kathleen Dispensa
Bill & Carol Dodge
Keith & Terry Faucher
Martin & Grete Finkelstein
David & Laura Follis
Jerry & Sandy Goldberg
Bill & Sharon Jordan
Alan & Patty Little
Leathem & Ann Mehaffey III
Victor T. Mitchell
Tom & Grace Padworski
Anna Marie Paolercio
Andrew Penkalo
Brune Picchi & Rose James
Ange Rapa
Arlene Reich, IMO Edward Reich

2024-2025 SEASON DONORS (CONTINUED)

BENEFACTORS (\$100+)

John Reifenberger
James Rockrohr
Mary Jo Ross
Michael & Sara Rothman
Mary Slavik
Helene Stagliano
Joe & Pam Tarquinio
Margherita Yara

PATRONS (\$25+)

Michael & Julie Adamcek
Phyllis J. Alongi
Charu Ashar
Steven Blanks
Michael A.* & Connie E. Boden
Chuck & Pat Burbridge
Fred & Michele Cantor
Charlotte Christman
Kayel & Anna Conklin
Tina Das
Susan T. Davis
Ben & Lorraine DeClemente
Vincent Farina
Debra Fauci
Gordon & Diane Flayter
Leonard & Barbara Greenberg
Sue Griffin
Timothy Grover
Jean Haight
Leeann Guerrier Haubrich
Edward & Pamela Herbst
Michael Hickey
John H. Hughes
Daniel & Anita Jones
Raymond & Carmen Langevin
David & Judith Longacre

PATRONS (\$25+)

Daniel & Karen Marron
Patricia Marsh
Rosemarie Martini
Alice McCarthy
William McConnell
Diane Monahan
Glen Morrice*
Jeanne Paino
Kenneth J. Parchinski
Dylan Parkin*
Elizabeth S. Pavelka
Wesley Peterson
Judith Dolan Pretak
Norma Remick
Charles Rhuda
Eric & Judy Rosenfeld
Elizabeth A. Roosa, Esq. and Roosa
& Roosa, Attorneys at Law
Catherine Rush
Janet Shaker
Patricia Slattery
Liz Smith
Jay & Nancy Strane
Lois Temple
Vivian Thain
Dennis & Claire Ullman
Jeanne Valentine-Chase
Marilyn Vetrano
Jeff Wilson*
Judy Wirges
Melanie Wynne
Nancy Yambem



Readers Theatre
is “theatre of the mind.”
No costumes. No props.
No sets. Just great
stories. Well told.



ELEANOR
UNDERNEATH THE LINTEL
CP2 MINI FESTIVAL ①

OCT
2024

BABEL
MARJORIE PRIME
CP2 MINI FESTIVAL ②

DEC
2024

WITCH
THE BURDENS
CP2 MINI FESTIVAL ③

MAR
2025

Constellations, 2023
Photo by Louisa Vilardi Photography.

CP2 READERS THEATRE SERIES

THREE MINI-FESTIVAL WEEKENDS

For the adventurous theatregoer:

Each weekend presents **two challenging plays** in a unique format.
A **six-show series** that challenges with as much gusto as it entertains.
Offers audiences and actors alike an opportunity to experience
theatre, underscoring its essence: **the playwright’s words.**

845-298-1491 | COUNTYPLAYERS.ORG
2681 W. MAIN ST., WAPPINGERS FALLS, NY 12590

COUNTY PLAYERS BOARD OF GOVERNORS (2024-2025)



Michael A. Boden
President



Christine E. Crawfis
1st Vice President



Kit Colbourn
2nd Vice President



Jody Coleman
Secretary



Michael J. Frohnhoefer
Treasurer



Rosemary Evaul



Christine McCarthy



Glen M. Morrice



Dylan Parkin



Joe Pettignano



David J. Ringwood



Mark Weglinski



Jeff Wilson

2024-2025 INDIVIDUAL DONORS

Donors may also choose to support our work by making an individual contribution (not associated with a subscription) during our year-end appeal and our spring campaign. We wish to express our special appreciation to the following individual contributors of \$50 and more (list is current from January 1, 2024, to January 1, 2025).

(= Current member of County Players Board of Governors; IMO=In Memory Of; IHO=In Honor Of.)*

(\$2500+)

Thomas G. Byrne
Kevin Robinson

(\$1000+)

David Hopper
(\$500 IHO Doug Woolley)

(\$500+)

Denny & Rosemary* Evaul
Jim Granger
IHO Ralph & Kathryn Bowman
Daniel Jacobs
Raymond Leduc, Sr.
David & Victoria Steinberg

(\$250+)

John & Ingrid Collins
Christine Crawfis & Robert Miller
Albert Hughes
Bradford & Barbara Kendall
John & Elaine Leinung
Donald & Arlene Rider
Tom & Leslie Schmeelk
Doug & Sylvia Woolley

(\$100+)

Trevor Allen
Kaela Altman
Mr. & Mrs. James Barba
Janet Bass

(\$100+)

Karen Beals
IMO Stephan Hale Calleran
Ruth Blash
Mary Ann & MaryBeth Boylan
Denise Brace
Allen Chen & DJ McErlean
Paul & Jody* Coleman
Vijay Dalal
Mike and Judi Elkin
Robert Ernest, IMO Carole Ernest
Martin & Grete Finkelstein
Peter & Ann Forman
Deborah Giordano
Jinny Goff
Jerry & Sandy Goldberg
Melinda & Paul Heady
John & Elaine Leinung
Patricia Marsh
Aruna McDermott
Albert Mendoza
Chelle & Brian Moore
Robert O'Dowd
Bill & Jayne Peckham
Jeff Purdy
Rebecca Reale
Parker & Steavie Hergenrader Reed
Denise Rempe
Judith Robins
Lowell Sanders

2024-2025 INDIVIDUAL DONORS (CONTINUED)

(\$100+)

Helene Stagliano
Roxanna Synnett
Ronaldo Wagner
Bruce Wallace
Beth Zambito

(\$50+)

Charu Asher
Kimberly Barnett
Craig Patrick Browne
Deborah Cohen
Laura Cormier
Vince Eagan
Margaret Gallagher
Thea Gallagher
Melissa Garza
Jeffrey & Elizabeth Graham
Stephanie Green
Brenda Haase
Jean Hait
Grant Hall
Mary Hemingway
Joseph Keegan
Carl Kleidman
Katri McEwen
Patricia Merrill
Brian Moore
William & Mary Neiman
Jeanne O'Connor
Cal & Susan Polikoff
Doug & Sylvia Propfe
Martin Silverman
Elizabeth Silverstein
Michael Weglinski

HONORARY

LIFETIME MEMBERS

Kevin Barnes & Sue Sciacca
Joe & Rachel Cassidy
Dilys Clark
Jody & Paul Coleman
Roger & Linda D'Aquino
Scott Diamond
Peter & Bernice Edman
Therese & William Knight
Tom & Enza Lawrence
Anna Marie Paolercio
Bill & Jayne Peckham
Joe Pettignano
Doug & Sylvia Propfe
David J. and Maria McCarthy
Ringwood
Nancy Scrivner
John T. Sloper
Jeff Wilson
Douglas & Julie Eads Woolley

TAX DEDUCTIBLE DONATIONS

County Players is a 501(c)(3) tax-exempt organization (EIN: 14-6030877). All contributions are deductible to the extent provided by law. County Players deeply appreciates those forward-thinking individuals who include the organization in their financial and estate planning.

ADOPT-A-SEAT DONORS

Cast of *Incorruptible* (2024)
in honor of its Crew

Cast & Crew of
It's Only A Play (2023)

Cast & Crew of
Native Gardens (2022)

Cast & Crew of
Seven Keys to Baldpate (2022)

Cast & Crew of
Pride and Prejudice (2021)

Cast & Crew of
The Price (2021)

Cast & Crew of
Prelude To A Kiss (2021)

Beryl Colbourn

Paul & Jody Coleman, IHO

Ralph & Kathryn Bowman

Robert Ernest

Rosemary & Denny Evaul

Robert Fiorentino

Tom Halstead & Karen Brewster

Susan Harvey

Victor T. Mitchell

Joe Prior

Bill & Jayne Peckham

David J. Ringwood,

IMO Maria McCarthy Ringwood

Jeff Wilson



**Adopt
A SEAT**

**ENGRAVE A SEAT PLAQUE
FEATURING THE NAME OR
TEXT OF YOUR CHOICE.**

COMMEMORATE A BIRTHDAY OR
ANNIVERSARY, MAKE A PERSONAL
CONTRIBUTION OR THOUGHTFUL
GIFT, HONOR OR MEMORIALIZE
SOMEONE'S LEGACY.

Your contribution supports our
ongoing capital improvement efforts,
which, in turn, allows us to continue
producing the finest community
theatre in the Hudson Valley.

MORE INFO: 845-298-1491

**COUNTY
PLAYERS**

An Ideal Husband, 2023. Louisa Vilardi Photography.

NOTES

NO RECORDING: The use of any audio or video recording device, and the taking of photographs, with or without flash, is strictly prohibited. Furthermore, the videotaping or making of electronic or other audio and/or visual recordings of this production and distributing recordings or streams in any medium, including the internet, is strictly prohibited, a violation of the author(s)'s rights and actionable under United States copyright law. Violators may be punished by ejection and violations may render the offender liable for monetary damages.

FIRE NOTICE: Fire exits are indicated by illuminated signs above the exit doors. In the event of fire or another emergency, please WALK to the nearest exit door.

TURN OFF ELECTRONIC DEVICES: The use of cellular phones, pagers, and other audible or light-emitting electronic devices is an annoyance to your fellow theater-goers and can interfere with our wireless lighting and sound systems. If you are in possession of any of these devices, please ensure they are TURNED OFF, not merely silenced, throughout the performance.

NO SMOKING: County Players Falls Theater is a smoke-free building. Smoking is prohibited anywhere on the premises and within 50 feet of any of the entrances.

Guests expecting **EMERGENCY MESSAGES** should notify the house manager upon their arrival at the theater.

LATECOMERS will be seated at the discretion of the management at the first appropriate interval on a space available basis.

RESTROOMS are located in the back of the theater.

EMERGENCY RESUSCITATION EQUIPMENT (AED) is located behind the refreshment counter in the lobby. County Players is designated a Heartsafe Location by the Dutchess County Commissioner of Health.

PARKING is at your own risk. County Players is not responsible for parking tickets, towing fees, or damage incurred to vehicles of patrons. Please obey all parking signs and regulations.

TICKETS are non-refundable. We do not accept unpaid reservations. Purchases may be made in advance or call the Box Office or online at countyplayers.org using your MasterCard, VISA, or Discover, by mailing a check at least two weeks prior to a performance.

COMMENTS AND SUGGESTIONS are welcomed by County Players. Please direct them to the House Manager who can be located through the Box Office. Policies are subject to change without notice.

DID YOU SEE OUR LAST PRODUCTIONS?



(l to r) Julie Seltzer, Rebecca Nagle, Keller Mickle, Carli Rhoades, Heather Foglia, Babel



(l to r) Trevor Allen, Claudia King, David Topps, Diane Preston, Craig Patrick Browne, Marjorie Prime

The background of the advertisement features a large American flag in the upper left, with its stars and stripes partially visible. The rest of the background is dominated by a vibrant red curtain that hangs in deep, vertical folds, creating a sense of depth and texture. The lighting is dramatic, with the red of the curtain appearing very bright and saturated.

Proud to Support
**County
Players**



HudsonValley[®]
CREDIT UNION

hvcu.org | 845.463.3011

